

THE TOWER BUILDING

110 Spadina Avenue

Toronto, Ontario | Suite 1000 - 12,115 SF





The Tower Building

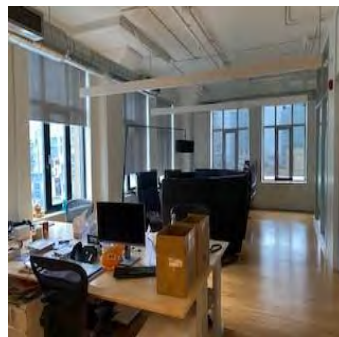
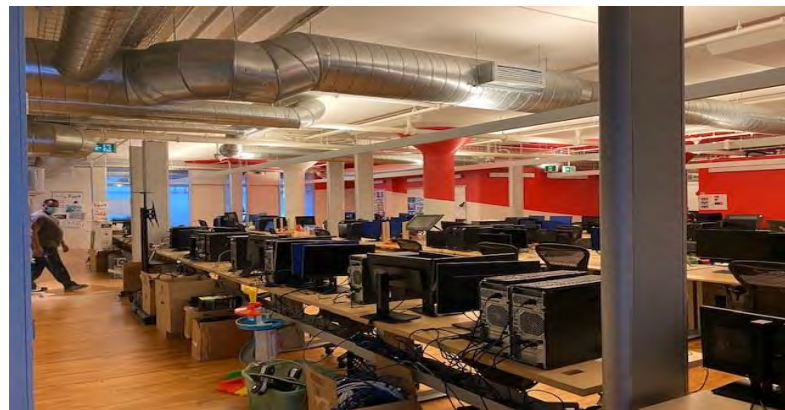
110 Spadina Avenue
Toronto, Ontario

The Tower Building is a 10 story heritage landmark located in the heart of Toronto's vibrant Downtown West. All building systems have been upgraded to modern standards while maintaining the integrity of its original architectural design. There are two completely refurbished passenger elevators and a freight elevator. The building is accessible from a number of public transit routes and it is within easy walking distance of the University Ave. subway and Union Station.

Featuring

Suite 1000 – 12,115 sq. ft.

- Available: February 1, 2024
- Full floor suite
- 16 private office, 2 boardrooms, a kitchenette/lunchroom & open area
- High ceilings & large windows that open
- Hardwood floors
- Tenant-controlled heating & cooling
- Roof top patio with free Wi-Fi
- High speed Internet
- Monthly parking available
- Dogs and bicycles are welcome



Contact

Harry Glicksman

Phone

416.930.0432

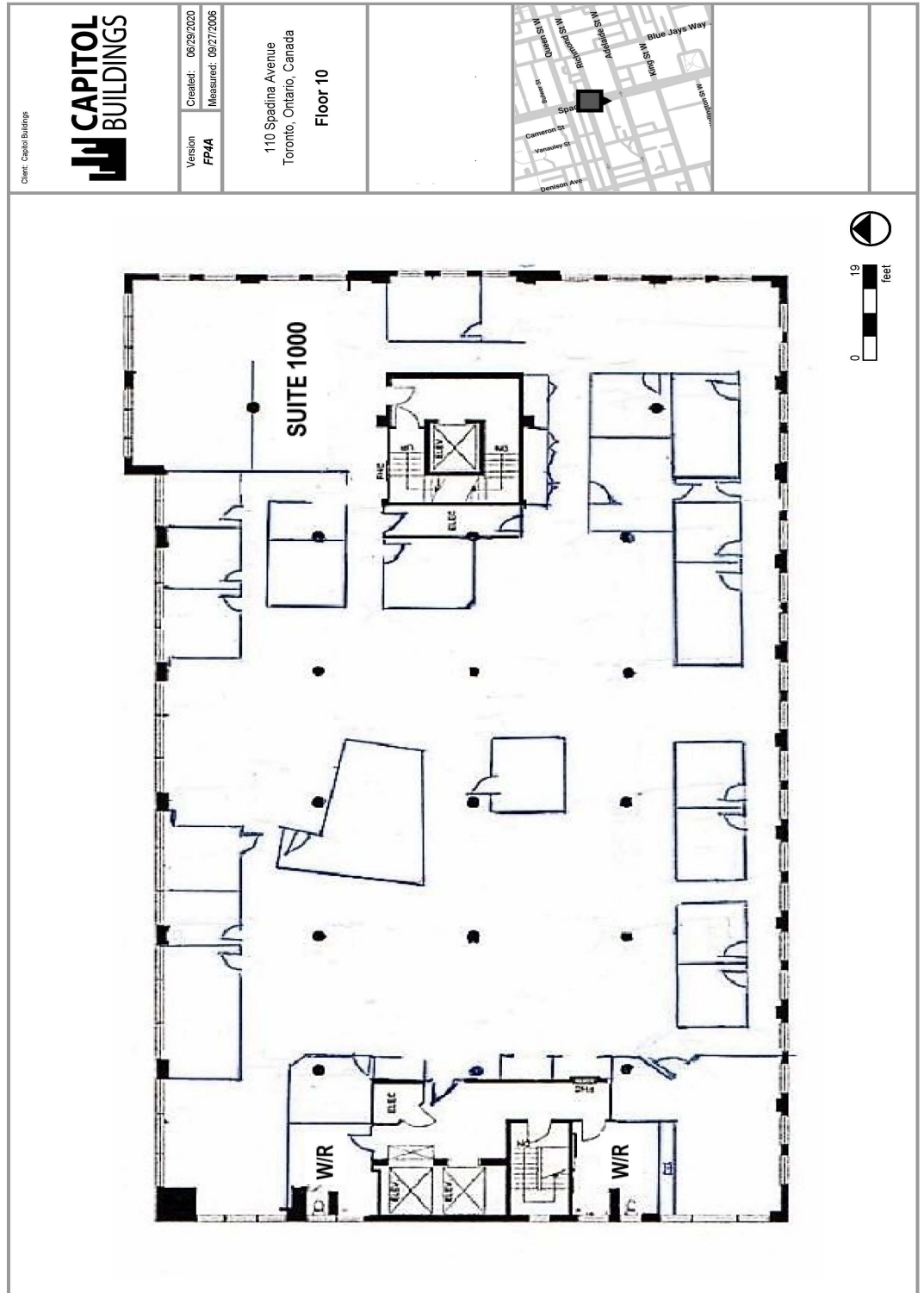
Email

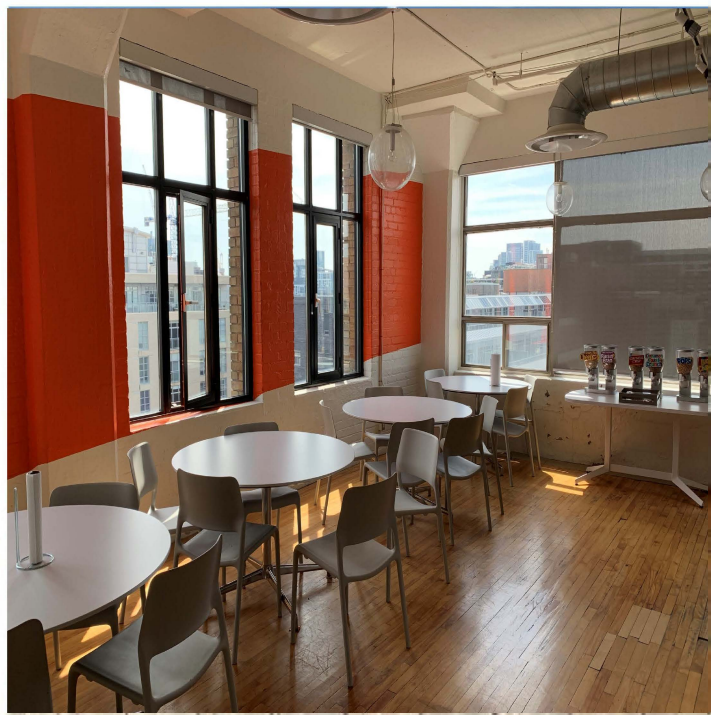
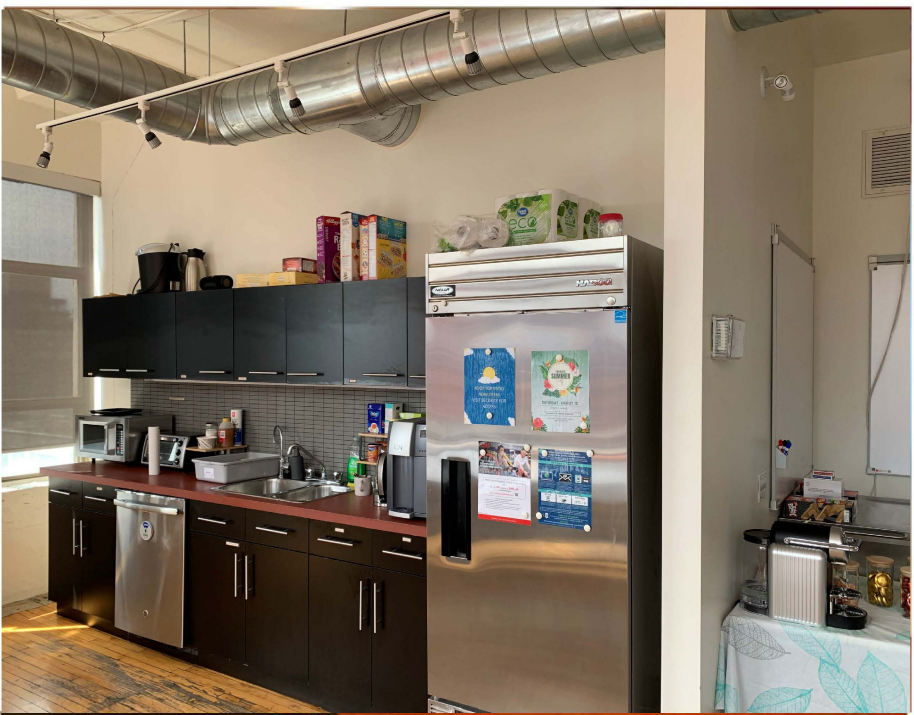
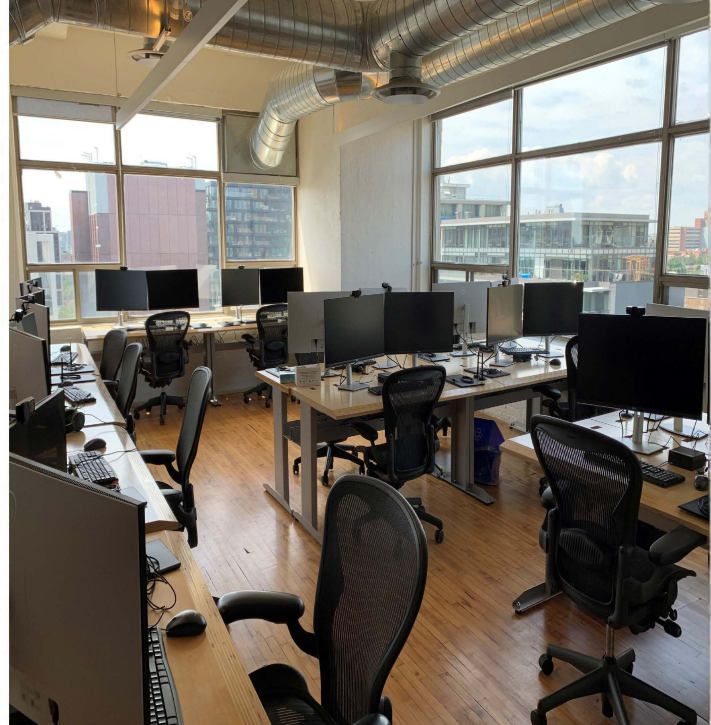
harry@capitolbuildings.com

Website

www.capitolbuildings.com

Floor Plan
Suite 1000
12,115 sq. ft.







THE TOWER BUILDING

110 Spadina Avenue
Toronto, Ontario

LEASING CONTACT:

Harry Glicksman
Leasing Representative
+1 416 930 0432
harry@capbuildings.com

Capitol Buildings
366 Adelaide Street West, Suite 605
Toronto, Ontario M5V 1R9
tel +1 416 596 0556 x 257 | fax +1 416 596 7390
www.capitolbuildings.com