

THE SYSTEMS BUILDING

46 Spadina Avenue

Toronto, Ontario | Suite 300 - 12,365 SF



THE SYSTEMS BUILDING

46 Spadina Avenue, Toronto, ON

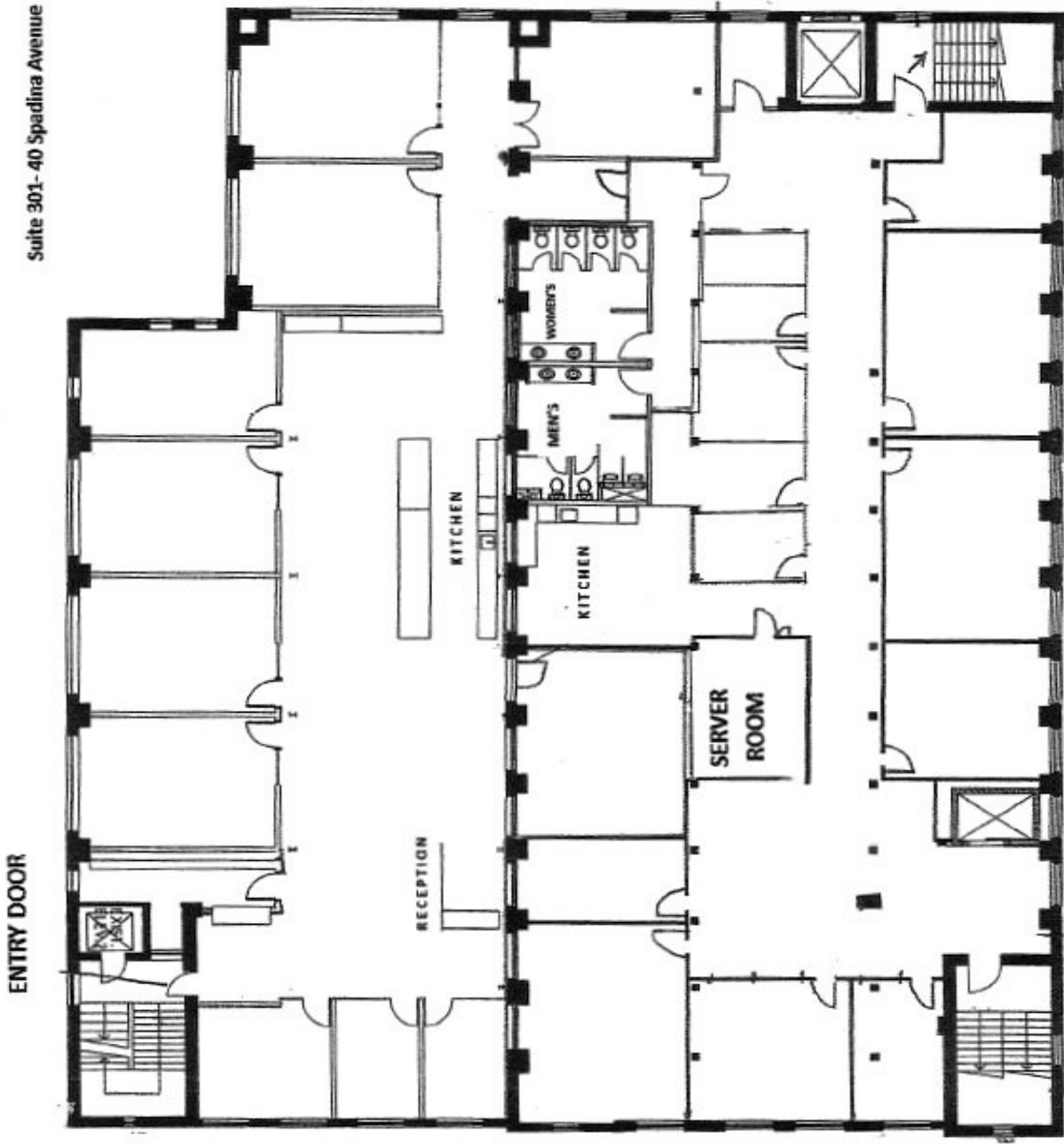
The Systems Building is a 5 story classic sandblasted brick and beam building prominently located in Toronto's vibrant Downtown West. All building systems have been upgraded to modern standards while maintaining the integrity of its original architectural design. There are two passenger elevators and a freight elevator. The building is on a number of public transit routes and it is within easy walking distance of the University Ave. subway and Union Station. Parking is available on site.

Suite 300 - 12,365 SF

- Available March 1, 2024
- Can be readily divided into 2 separate suites, approximately 6,000 sq.ft each
- A mix of offices, meeting rooms, a kitchen, and open space.
- High ceilings and windows that open
- Sand blasted brick & beam throughout
- Restored hardwood floors
- Tenant controlled heating & cooling
- Roof top patio with free Wi-Fi
- High speed Internet
- Monthly parking available
- Dogs & bicycles are welcome



FLOOR PLAN



Suite 301-40 Spadina Avenue

ENTRY DOOR

KITCHEN

KITCHEN

SERVER ROOM

RECEPTION

WOMEN'S

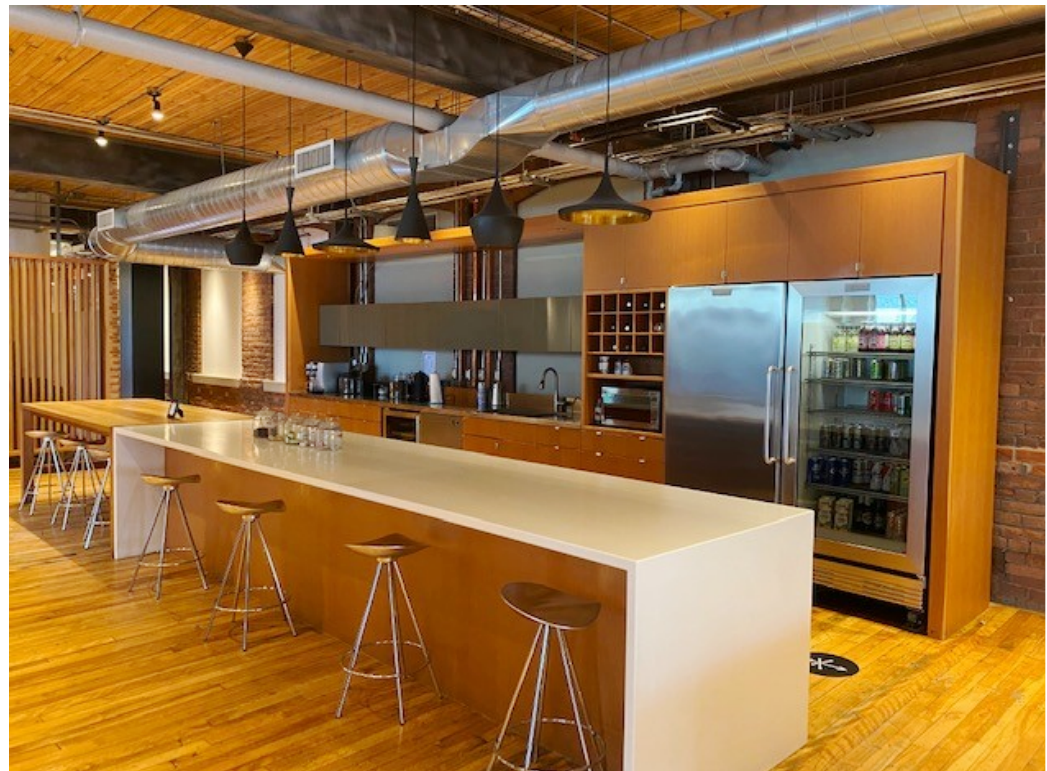
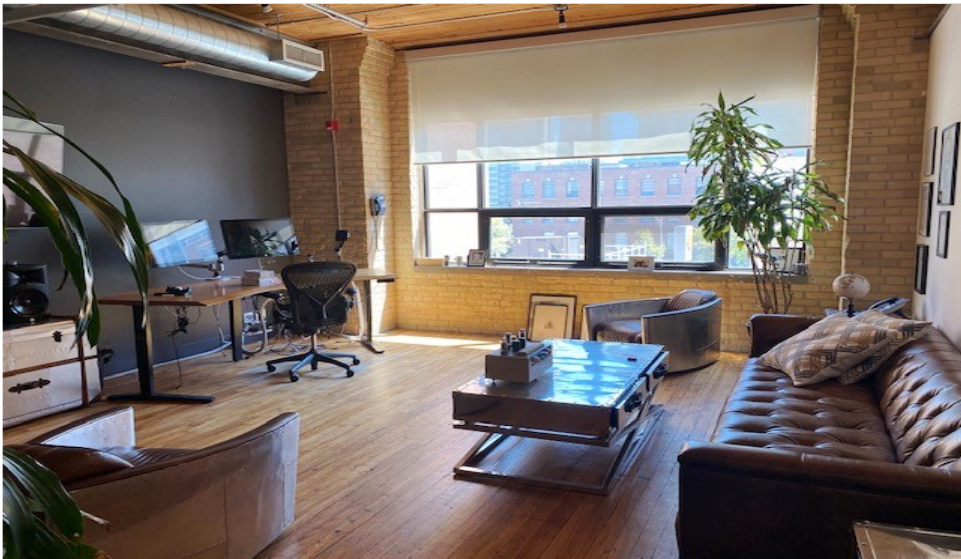
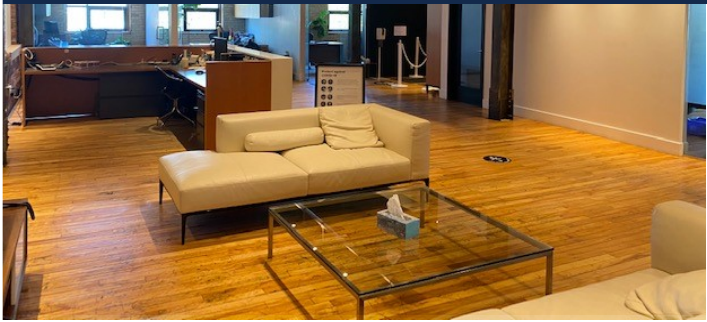
MEN'S

40 SPADINA AVENUE

46 SPADINA AVENUE

SPADINA AVENUE

PHOTO GALLERY





THE SYSTEMS BUILDING

46 Spadina Avenue
Toronto, Ontario

LEASING CONTACT:

Harry Glicksman
Leasing Representative
+1 416 930 0432
harry@capbuildings.com

Capitol Buildings
366 Adelaide Street West, Suite 605
Toronto, Ontario M5V 1R9
tel +1 416 596 0556 x 257 | fax +1 416 596 7390
www.capitolbuildings.com