

THE CAPITOL BUILDING

366 Adelaide Street West

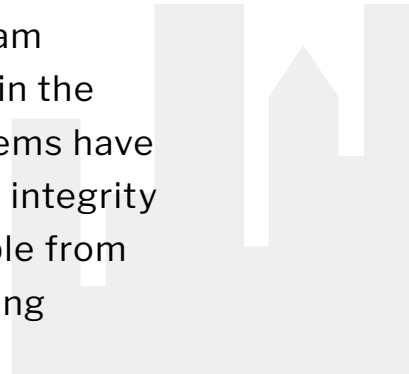
Toronto, Ontario | Suite 201 - 6,168 SF



THE CAPITOL BUILDING

366 Adelaide Street West, Toronto, ON

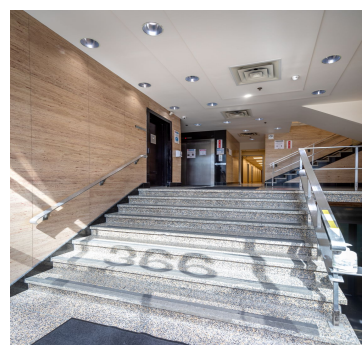
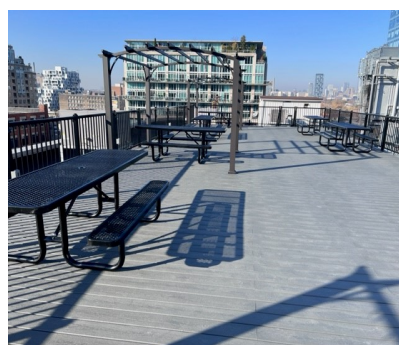
The Capitol Building is a 7 story sand blasted brick and beam former warehouse converted to an office building located in the heart of vibrant Toronto Downtown West. All building systems have been upgraded to modern standards while maintaining the integrity of its original architectural design. The building is accessible from a number of public transit routes and it is within easy walking distance of the University Ave. subway and Union Station.



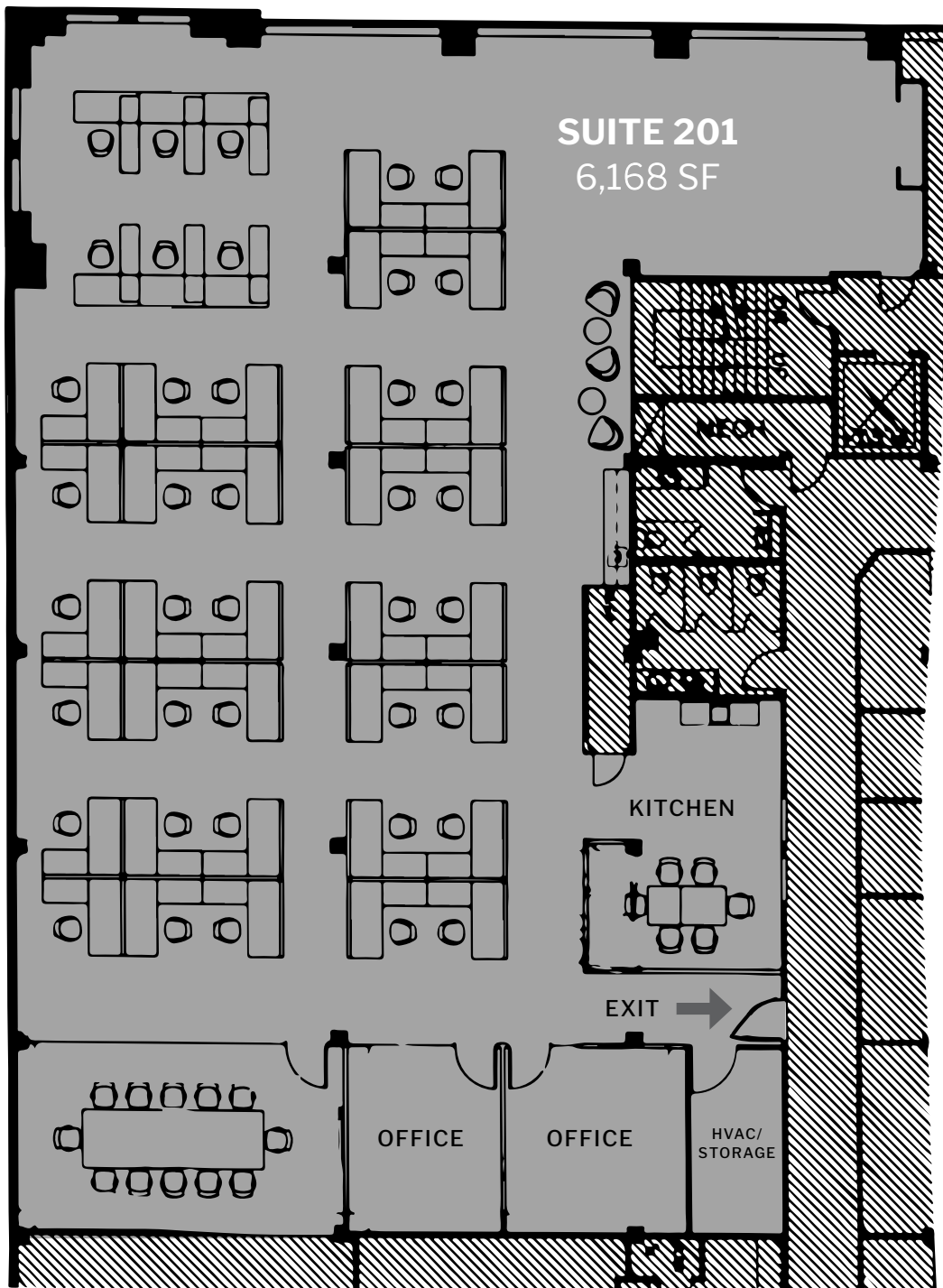
Featuring

Suite 201 - 6,168 SF

- Available Immediately
- 2 private offices, a boardroom, a storage cupboard, a lunch room with kitchenette, and ample open space
- Landlord will make substantial leasehold improvements to suit Tenant's requirements
- High ceilings & large windows that open
- Hardwood floors
- Tenant controlled heating & cooling
- High speed Internet
- Monthly parking available
- Dogs & bicycles welcome
- Roof top deck with free Wi-Fi

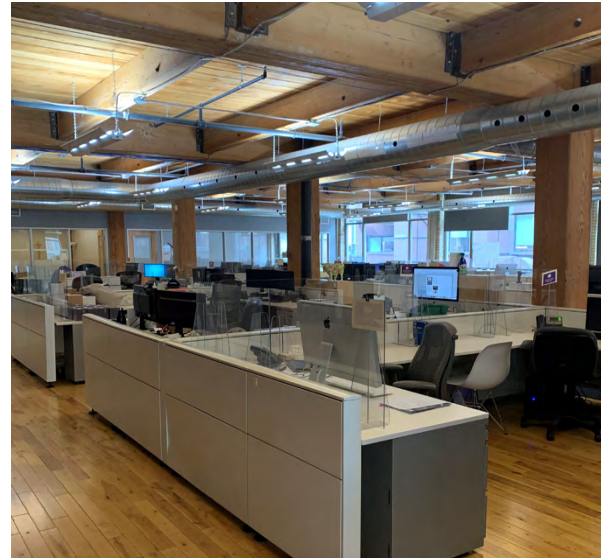
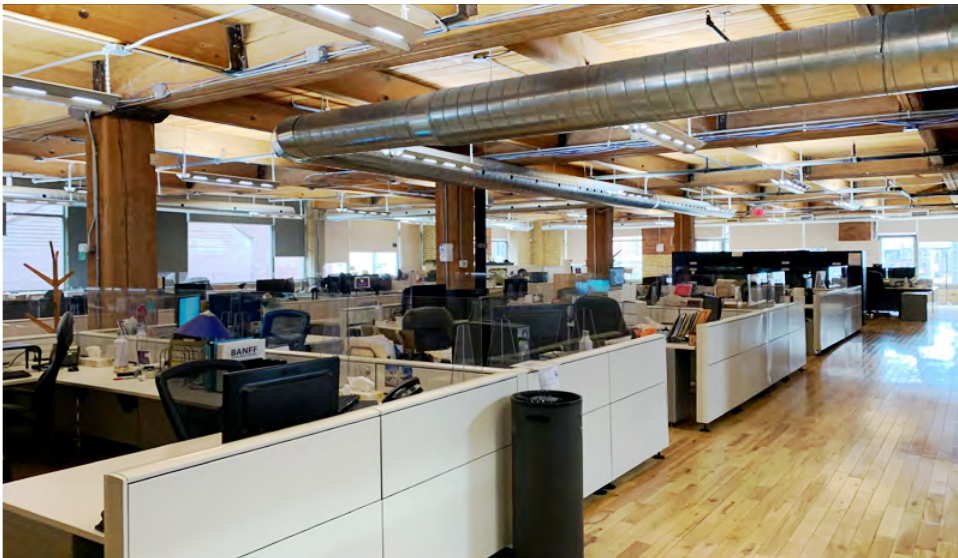


FLOOR PLAN



ADELAIDE STREET WEST

PHOTO GALLERY





THE CAPITOL BUILDING

366 Adelaide Street West
Toronto, Ontario

LEASING CONTACT:

Harry Glicksman

Leasing Representative

+1 416 930 0432

harry@capbuildings.com

Capitol Buildings

366 Adelaide Street West, Suite 605

Toronto, Ontario M5V 1R9

tel +1 416 596 0556 x 257 | fax +1 416 596 7390

www.capitolbuildings.com