

THE CAPITOL BUILDING

366 Adelaide Street West

Toronto, Ontario | Suite 607 - 5,580 SF



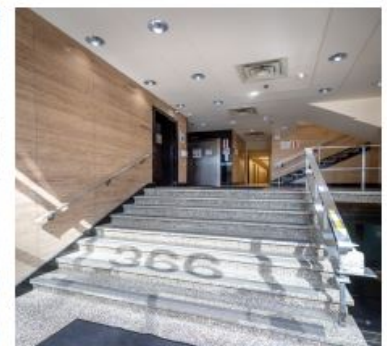
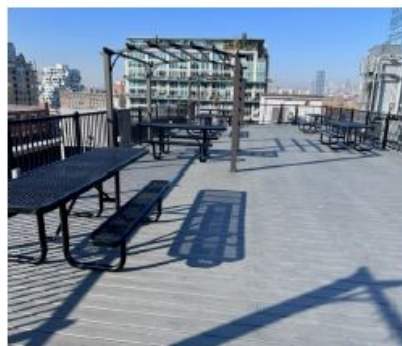
THE CAPITOL BUILDING

366 Adelaide Street West, Toronto, ON

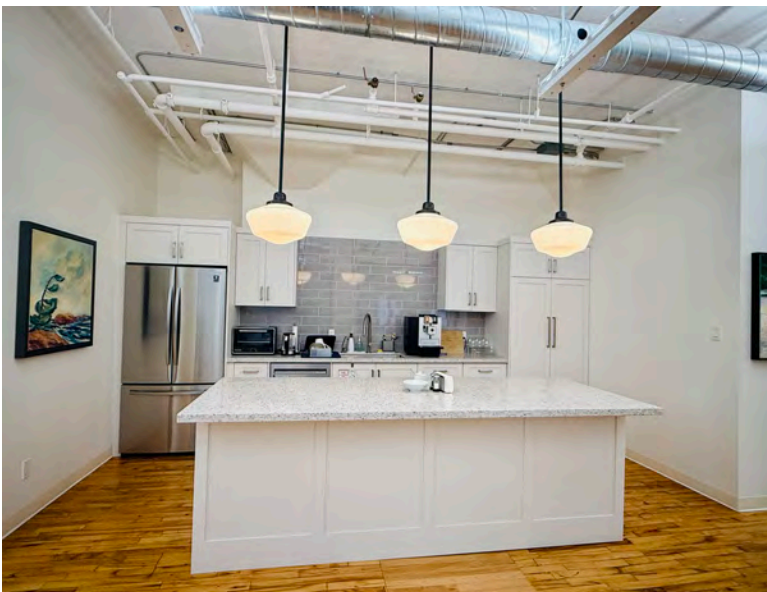
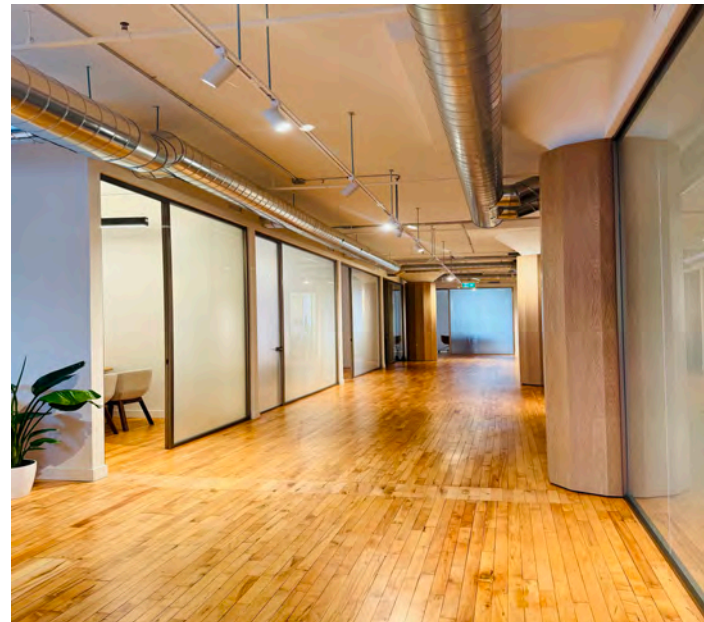
The Capitol Building is a 7 story sand blasted brick and beam former warehouse converted to an office building located in the heart of vibrant Toronto Downtown West. All building systems have been upgraded to modern standards while maintaining the integrity of its original architectural design. The building is accessible from a number of public transit routes and it is within easy walking distance of the University Ave. subway and Union Station.

Featuring Suite 607 - 5,580 SF

- Available Q2025
- Landlord will build out this unit to suit tenants requirements
- High ceilings & large windows that open
- Hardwood floors
- Tenant controlled heating & cooling
- High speed Internet
- Monthly parking available at market rates
- Roof top deck with free Wi-Fi
- Dogs & bicycles welcome
- Furniture available

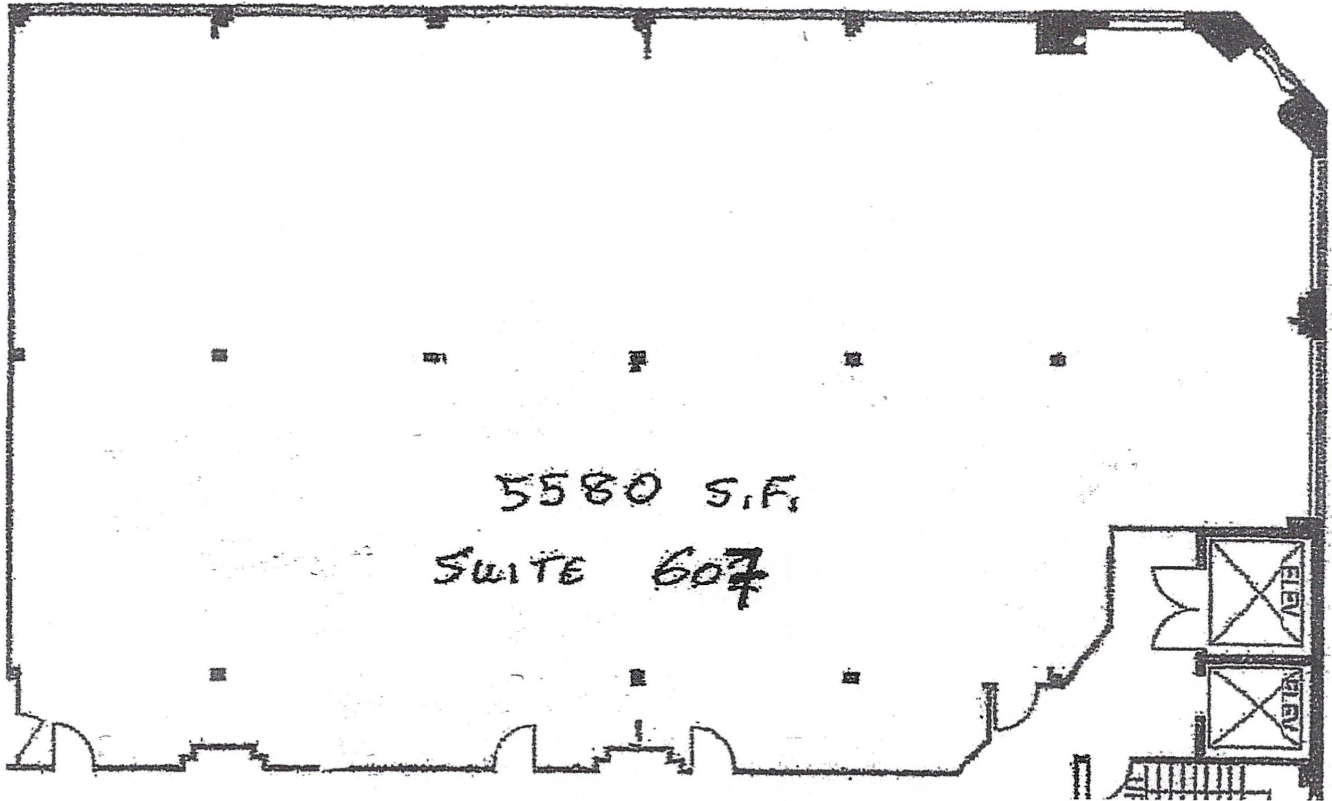


Photos of Recently Improved Units



ROOFTOP PATIO

FLOOR PLAN



ADELAIDE STREET WEST



THE CAPITOL BUILDING

366 Adelaide Street West
Toronto, Ontario

LEASING CONTACT:

Harry Glicksman

Leasing Representative

+1 416 930 0432

harry@capbuildings.com

Capitol Buildings

366 Adelaide Street West, Suite 605

Toronto, Ontario M5V 1R9

tel +1 416 596 0556 x 257 | fax +1 416 596 7390

www.capitolbuildings.com