

# THE CAPITOL BUILDING

366 Adelaide Street West

Toronto, Ontario | Suite LL04 - 1,510 SF





# THE CAPITOL BUILDING

366 Adelaide Street West, Toronto, ON

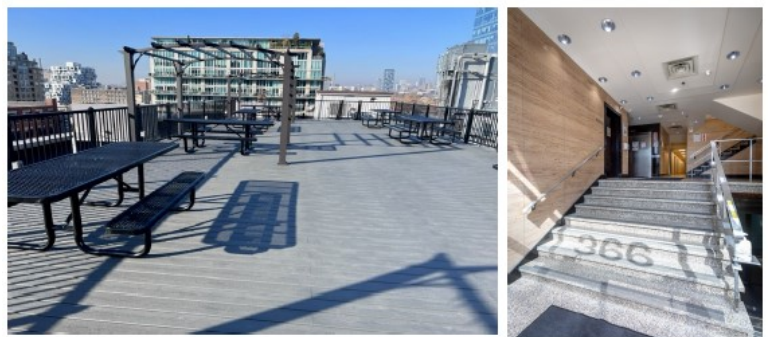
The Capitol Building is a 7 story sand blasted brick and beam former warehouse converted to an office building located in the heart of vibrant Toronto Downtown West. All building systems have been upgraded to modern standards while maintaining the integrity of its original architectural design. The building is accessible from a number of public transit routes and it is within easy walking distance of the University Ave. subway and Union Station.

---

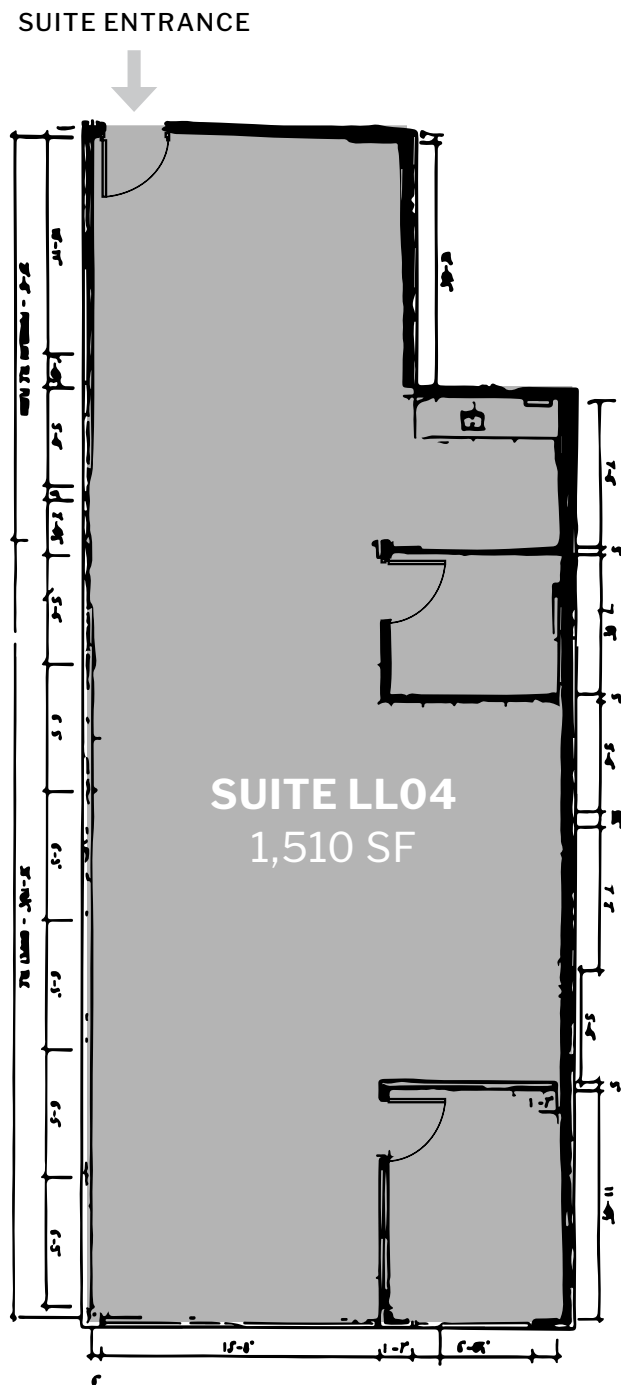
Featuring

## Suite LL04 - 1,510 SF

- Available March 1, 2025
- 1 private office, a boardroom, a storage cupboard, a lunch room with kitchenette, and ample open space
- High ceilings & large windows
- Concrete floor
- Tenant controlled heating & cooling
- High speed Internet
- Monthly parking available
- Dogs & bicycles welcome
- Roof top deck with free Wi-Fi
- Some furniture available



# FLOOR PLAN



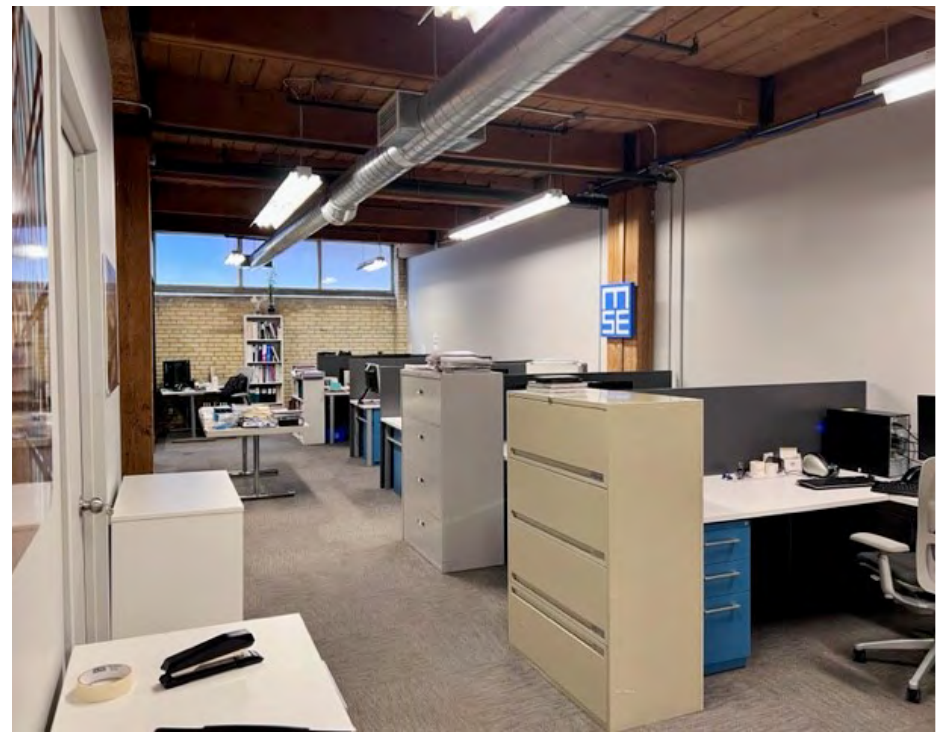
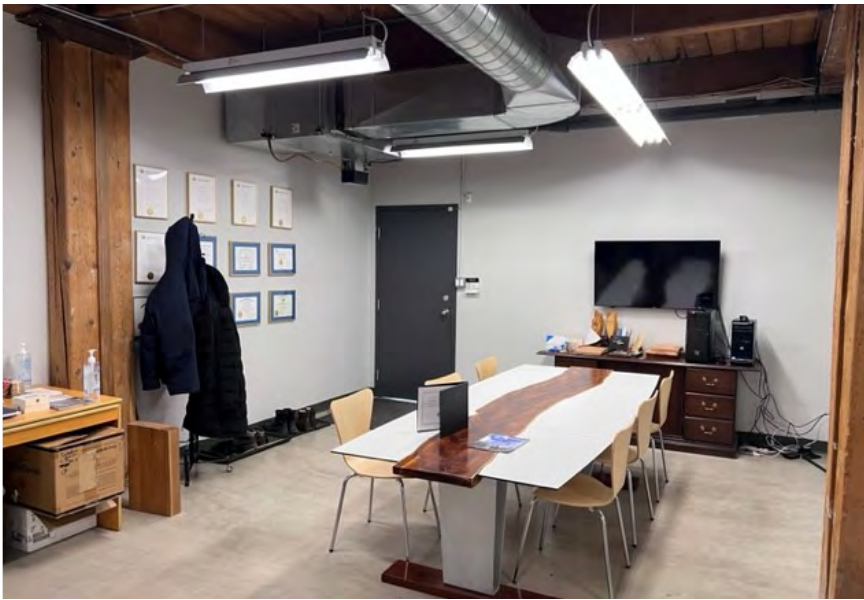
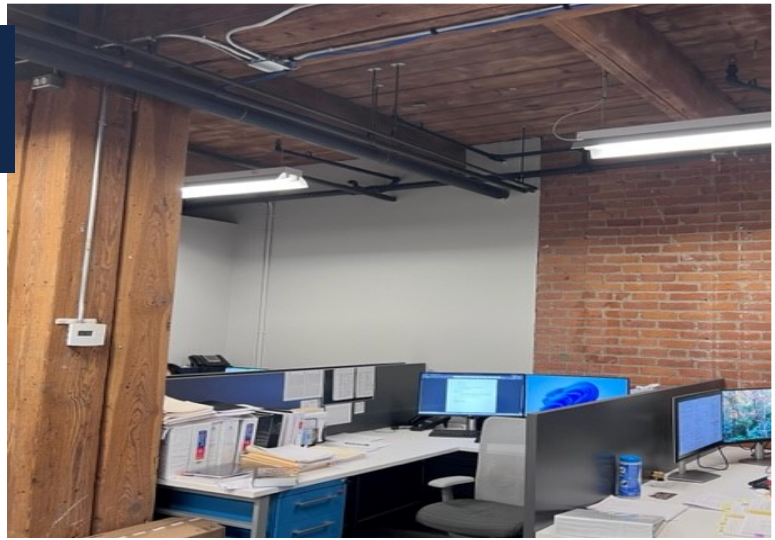
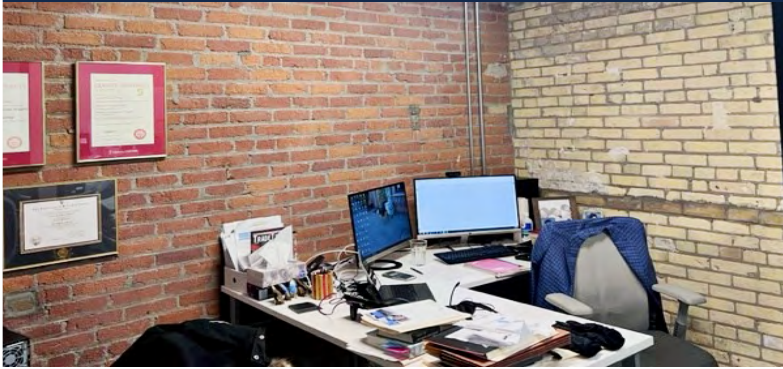
---

ADELAIDE STREET WEST

---



# PHOTO GALLERY







# THE CAPITOL BUILDING

---

366 Adelaide Street West  
Toronto, Ontario

## LEASING CONTACT:

**Harry Glicksman**

Leasing Representative

+1 416 930 0432

[harry@capbuildings.com](mailto:harry@capbuildings.com)

---

## Capitol Buildings

366 Adelaide Street West, Suite 605

Toronto, Ontario M5V 1R9

tel +1 416 596 0556 x 257 | fax +1 416 596 7390

[www.capitolbuildings.com](http://www.capitolbuildings.com)