

# THE CAPITOL BUILDING

366 Adelaide Street West

Toronto, Ontario | Suite 607 - 5,580 SF



# THE CAPITOL BUILDING

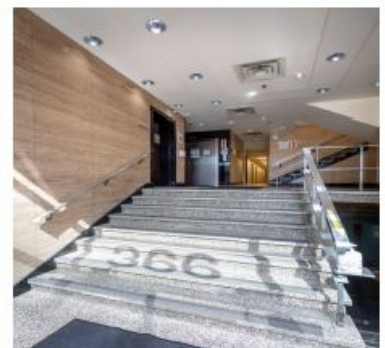
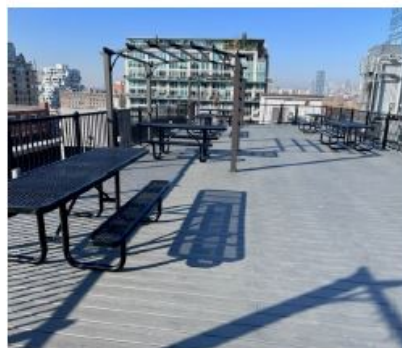
366 Adelaide Street West, Toronto, ON

The Capitol Building is a 7 story sand blasted brick and beam former warehouse converted to an office building located in the heart of vibrant Toronto Downtown West. All building systems have been upgraded to modern standards while maintaining the integrity of its original architectural design. The building is accessible from a number of public transit routes and it is within easy walking distance of the University Ave. subway and Union Station.

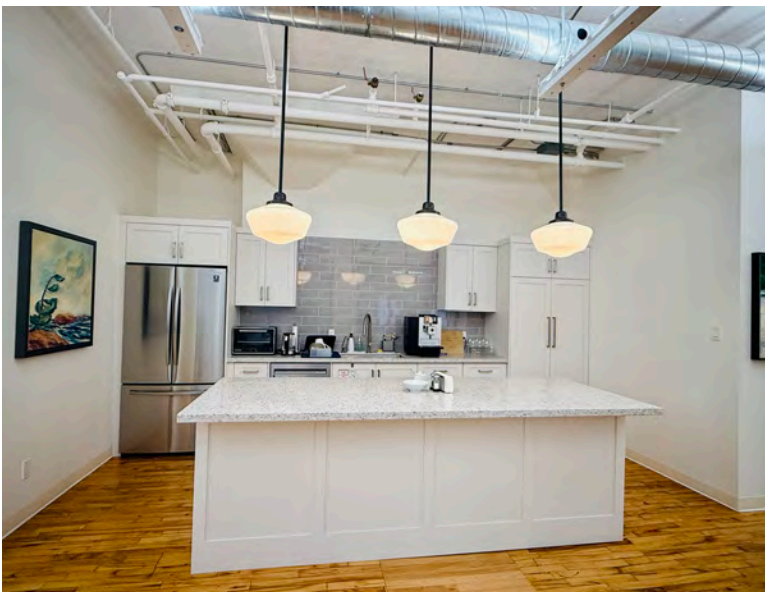
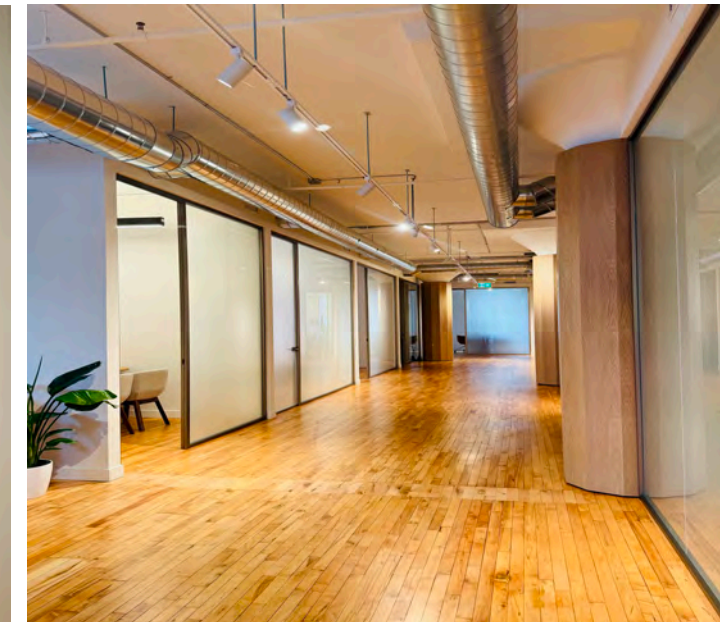
---

## Featuring Suite 607 - 5,580 SF

- Available Q2 2025
- Landlord will build out this unit to suit tenants requirements
- High ceilings & large windows that open
- Hardwood floors
- Tenant controlled heating & cooling
- High speed Internet
- Monthly parking available at market rates
- Roof top deck with free Wi-Fi
- Dogs & bicycles welcome
- Furniture available

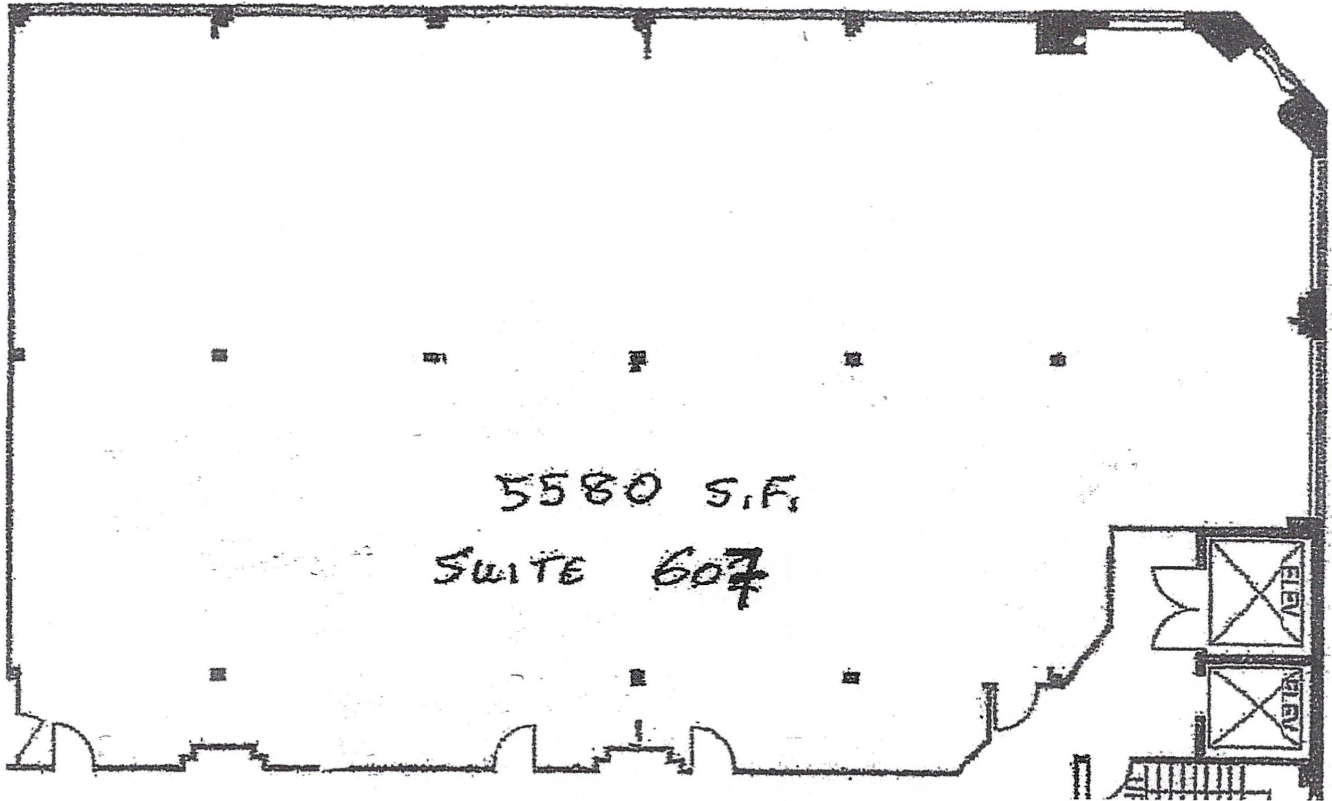


# Photos of Recently Improved Units



**ROOFTOP PATIO**

# FLOOR PLAN



---

ADELAIDE STREET WEST

---



# THE CAPITOL BUILDING

---

366 Adelaide Street West  
Toronto, Ontario

## LEASING CONTACT:

**Harry Glicksman**

Leasing Representative

+1 416 930 0432

[harry@capbuildings.com](mailto:harry@capbuildings.com)

---

## Capitol Buildings

366 Adelaide Street West, Suite 605

Toronto, Ontario M5V 1R9

tel +1 416 596 0556 x 257 | fax +1 416 596 7390

[www.capitolbuildings.com](http://www.capitolbuildings.com)