

# THE COMMODORE BUILDING

317 Adelaide Street West

Toronto, Ontario | Suite 1005 - 2,373 SF



# THE COMMODORE BUILDING

317 Adelaide Street West, Toronto, ON

The Commodore Building is a heritage landmark located in the heart of Toronto's vibrant Downtown West. All building systems have been upgraded to modern standards while maintaining the integrity of its original architectural design. There are two completely refurbished passenger elevators and two freight elevators. The building is accessible from a number of public transit routes and it is within walking distance of the University Avenue subway and Union Station. In addition there is an incredible rooftop patio with free Wi-fi.

---

## Featuring

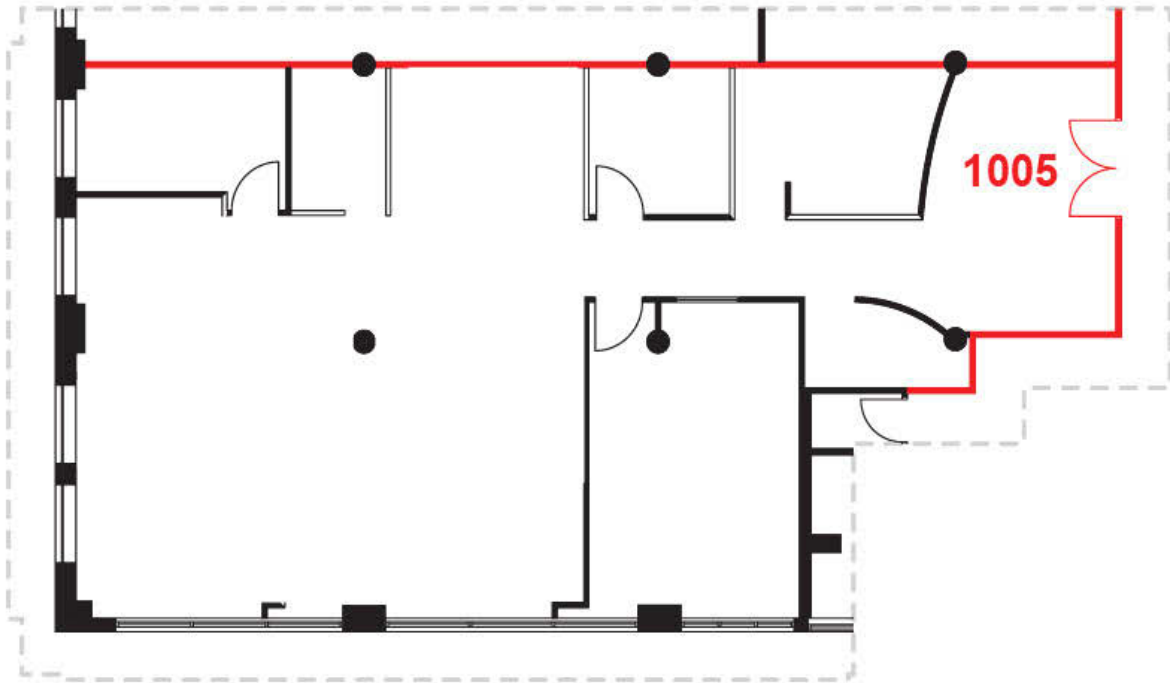
### Suite 1005 - 2,373 SF

- Built out space with 2 offices, a board room, a small meeting room, kitchenette, and large open space
- High ceilings & large windows that are operable
- Hardwood floors
- Tenant controlled heat & cooling
- Monthly parking available at current rates
- Dogs & bicycles are welcome



# FLOOR PLAN

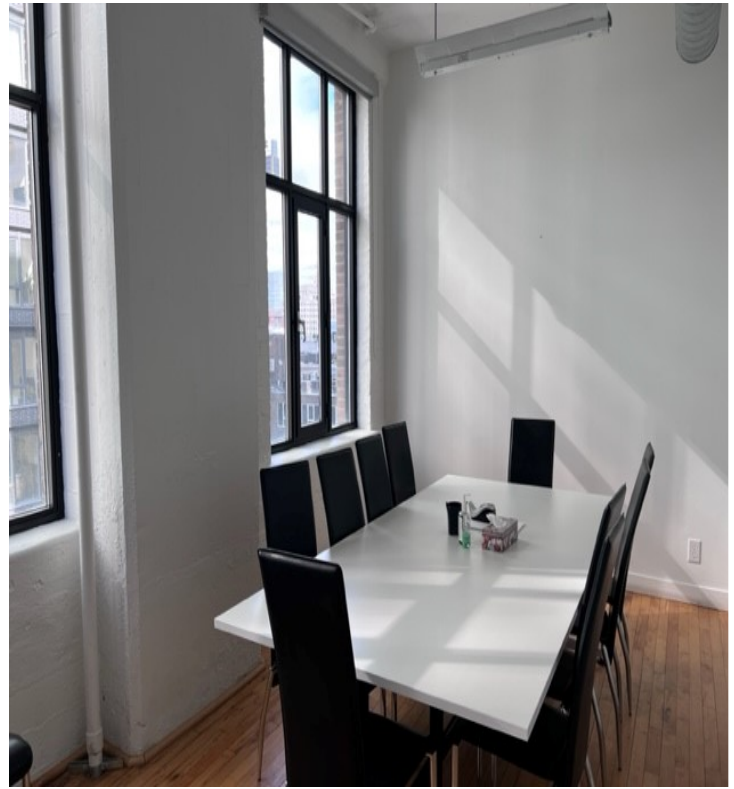
Capitol Buildings  
317 Adelaide Street West, Toronto  
Suite 1005



---

ADELAIDE STREET WEST

---



# PHOTO GALLERY



# THE CAPITOL BUILDING

---

317 Adelaide Street West  
Toronto, Ontario

## LEASING CONTACT:

**Harry Glicksman**  
Leasing Representative  
+1 416 930 0432  
[harry@capbuildings.com](mailto:harry@capbuildings.com)

---

**Capitol Buildings**  
317 Adelaide Street West, Suite 605  
Toronto, Ontario M5V 1R9  
tel +1 416 596 0556 x 257 | fax +1 416 596 7390  
[www.capitolbuildings.com](http://www.capitolbuildings.com)