

THE CAPITOL BUILDING

366 Adelaide Street West

Toronto, Ontario | Suite 701 - 4,148 SF



THE CAPITOL BUILDING

366 Adelaide Street West, Toronto, ON

The Capitol Building is a 7 story sand blasted brick and beam former warehouse converted to an office building located in the heart of vibrant Toronto Downtown West. All building systems have been upgraded to modern standards while maintaining the integrity of its original architectural design. The building is accessible from a number of public transit routes and it is within easy walking distance of the University Ave. subway and Union Station. In addition there is an incredible rooftop patio with free Wi-fi.

Featuring

Suite 701 - 4,148 SF

- Landlord is returning this bright corner unit to base building condition and will make leasehold improvements to suit Tenant's requirements.
- High ceilings & large windows that are operable
- Hardwood floors
- Tenant controlled heat & cooling
- High speed Internet
- Dogs & bicycles welcome
- Monthly parking available at market rates

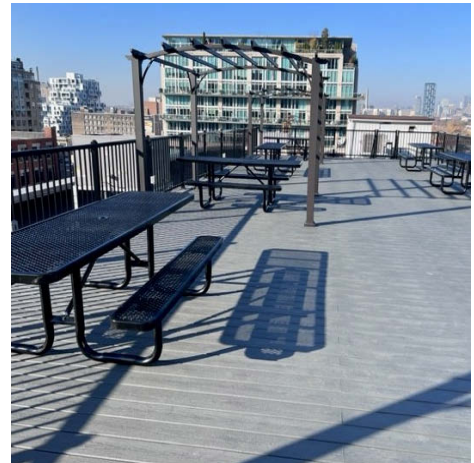
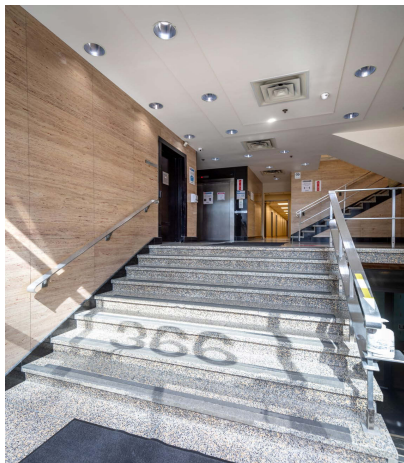
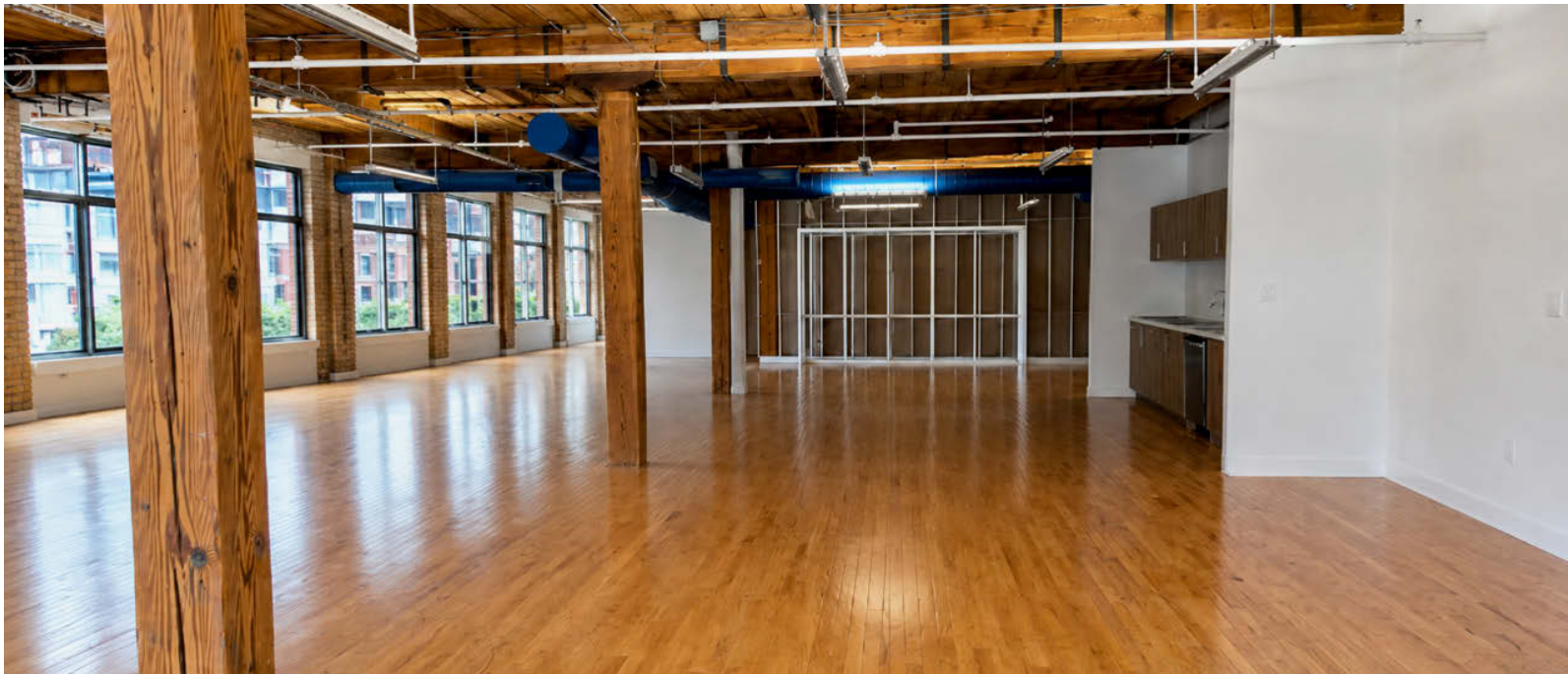
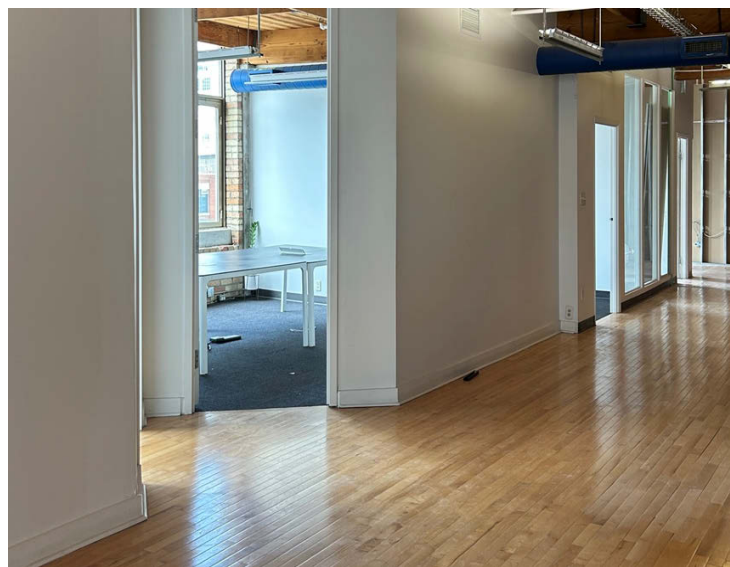
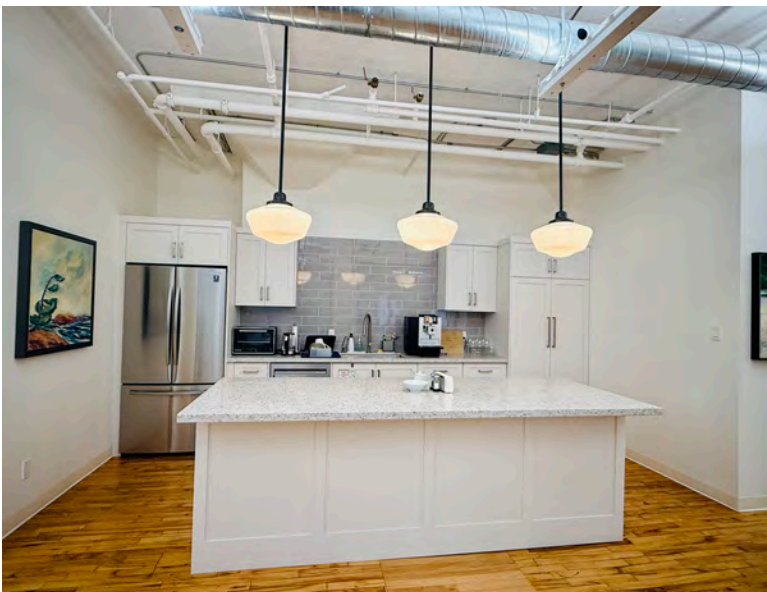
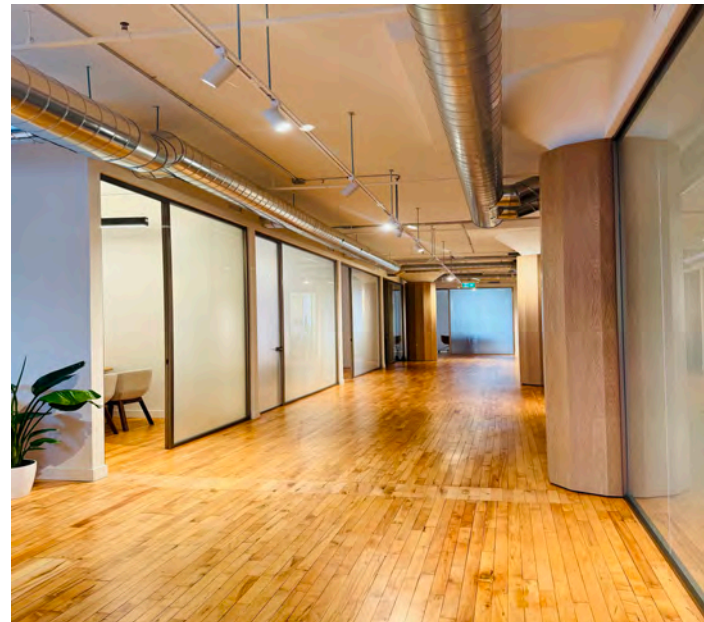


PHOTO GALLERY

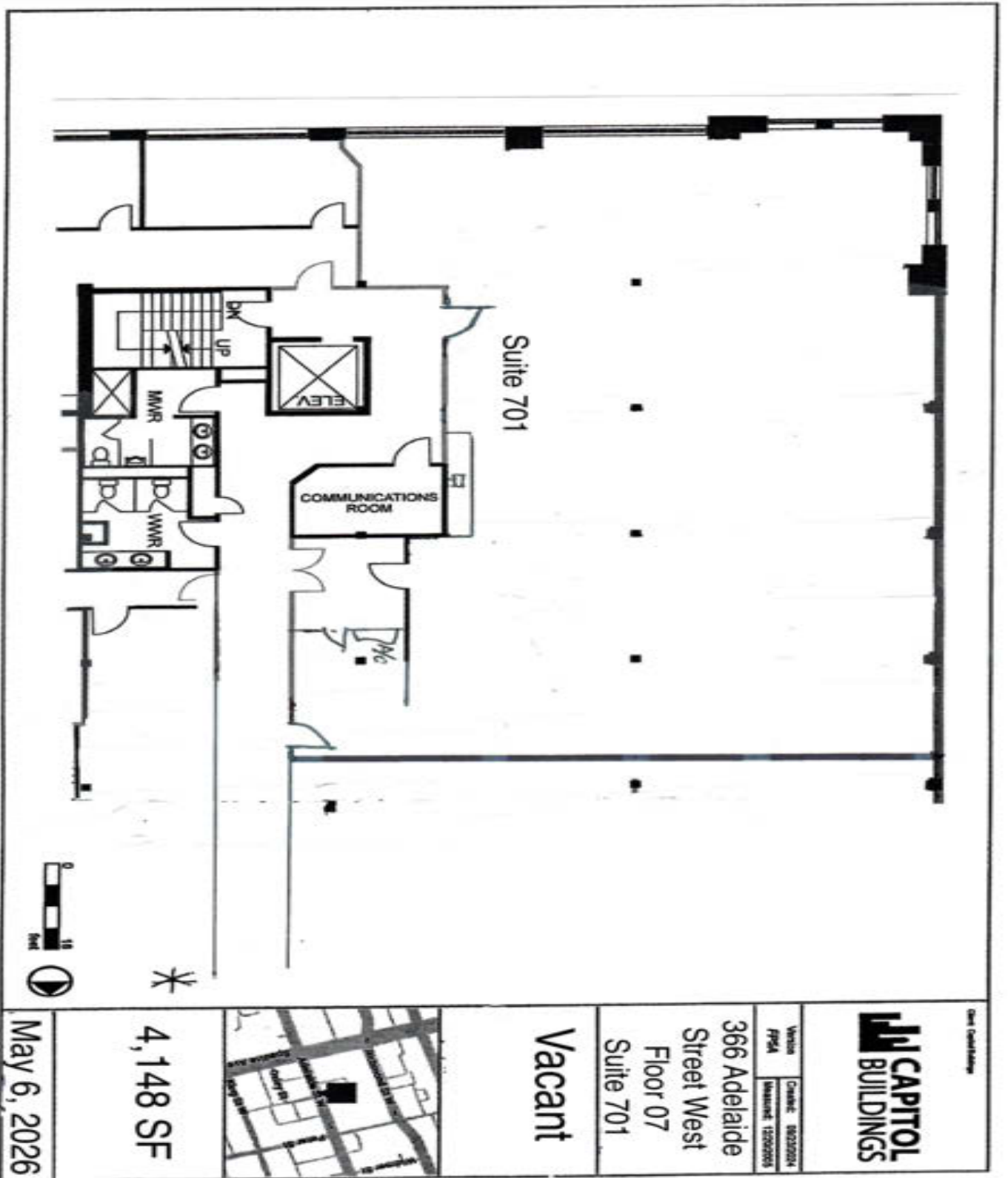


Photos of Recently Improved Units



ROOFTOP PATIO

FLOOR PLAN



366 ADELAIDE STREET WEST



THE CAPITOL BUILDING

366 Adelaide Street West
Toronto, Ontario

LEASING CONTACT:

Harry Glicksman
Leasing Representative
+1 416 930 0432
harry@capbuildings.com

Capitol Buildings
366 Adelaide Street West, Suite 605
Toronto, Ontario M5V 1R9
tel +1 416 596 0556 x 257 | fax +1 416 596 7390
www.capitolbuildings.com