

THE TOWER BUILDING

110 Spadina Avenue

Toronto, Ontario | SUITE 500 - 12,117 SF



The Tower Building

110 Spadina Avenue, Toronto, ON

The Tower Building is a 10 story heritage landmark located in the heart of Toronto's vibrant Downtown West. All building systems have been upgraded to modern standards while maintaining the integrity of its original architectural design. There are two completely refurbished passenger elevators and a freight elevator. The building is accessible from a number of public transit routes and it is within easy walking distance of the University Avenue subway and Union Station. In addition there is an incredible rooftop patio with free Wi-fi.

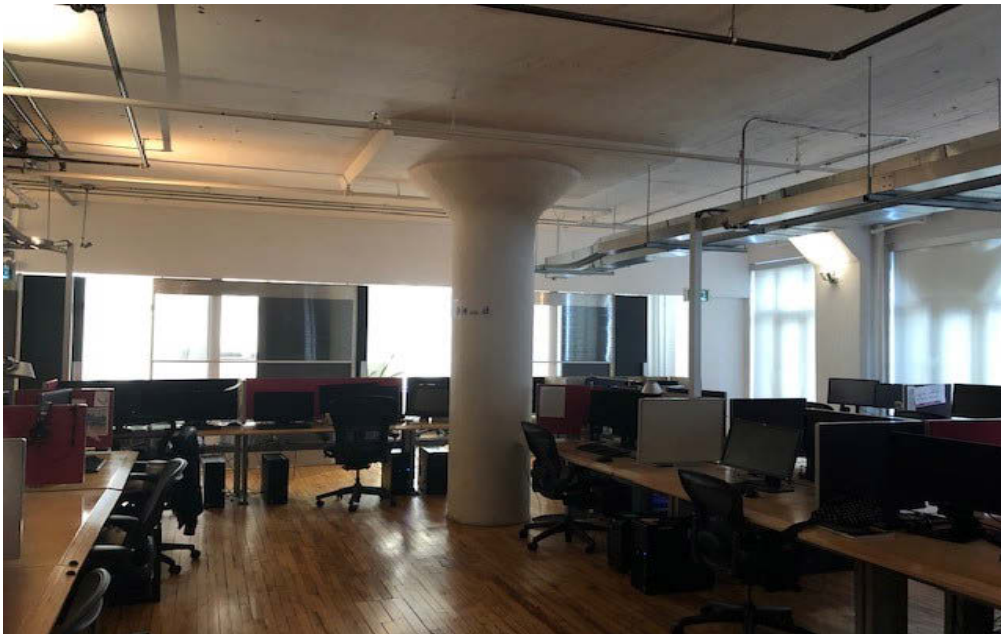
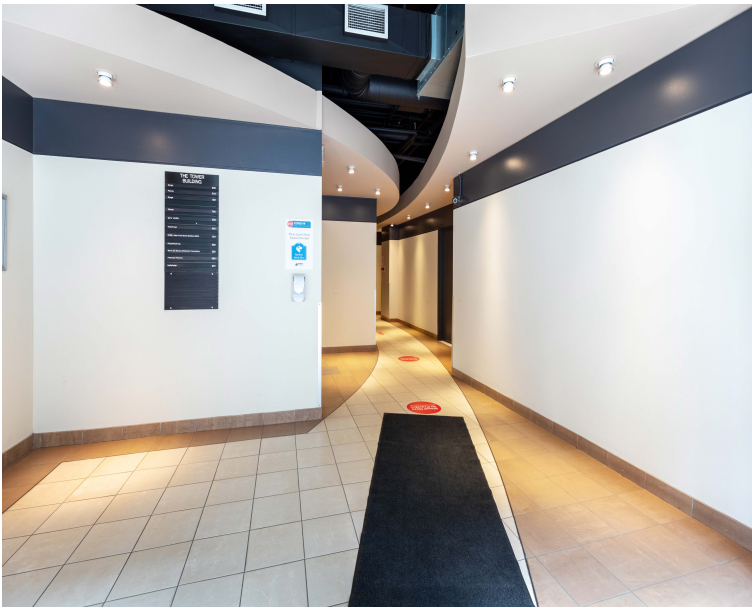
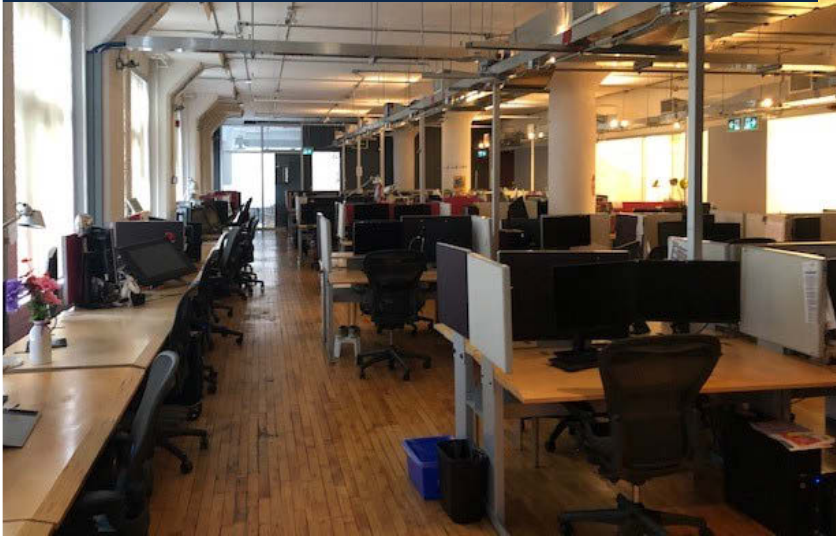
Featuring

Suite 500 - 12,117 SF

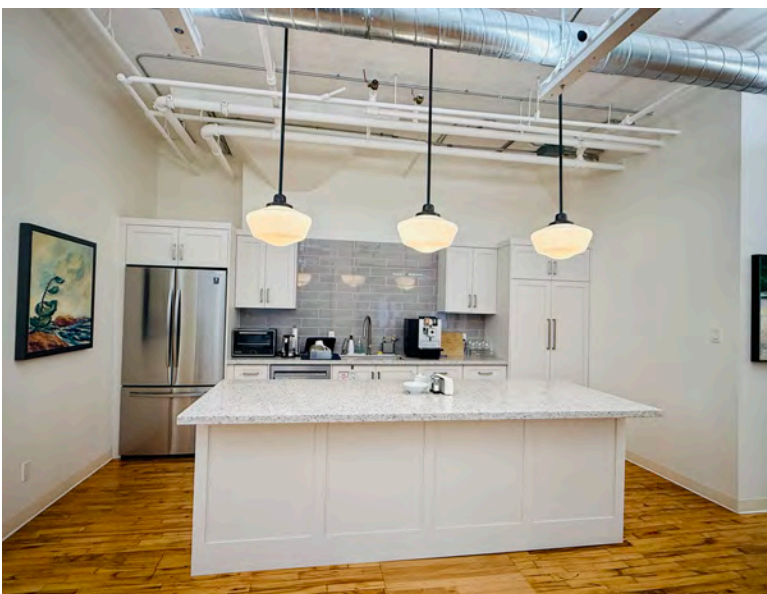
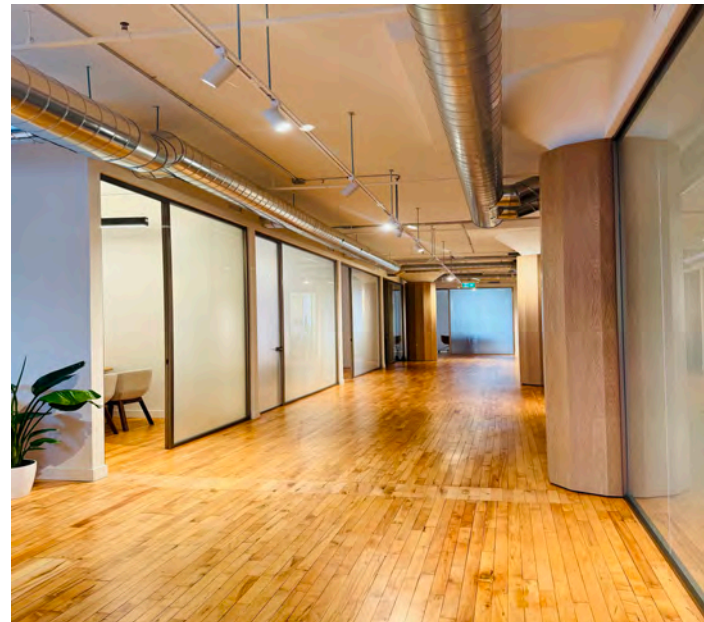
- Space will be brought back to base building condition
- Full floor suite or Landlord will divide
- Landlord will build out suite to Tenant's specification
- High ceilings & large windows that are operable
- Hardwood floors
- Tenant-controlled heat & cooling
- High speed Internet
- Monthly parking available at market rates
- Dogs and bicycles are welcome



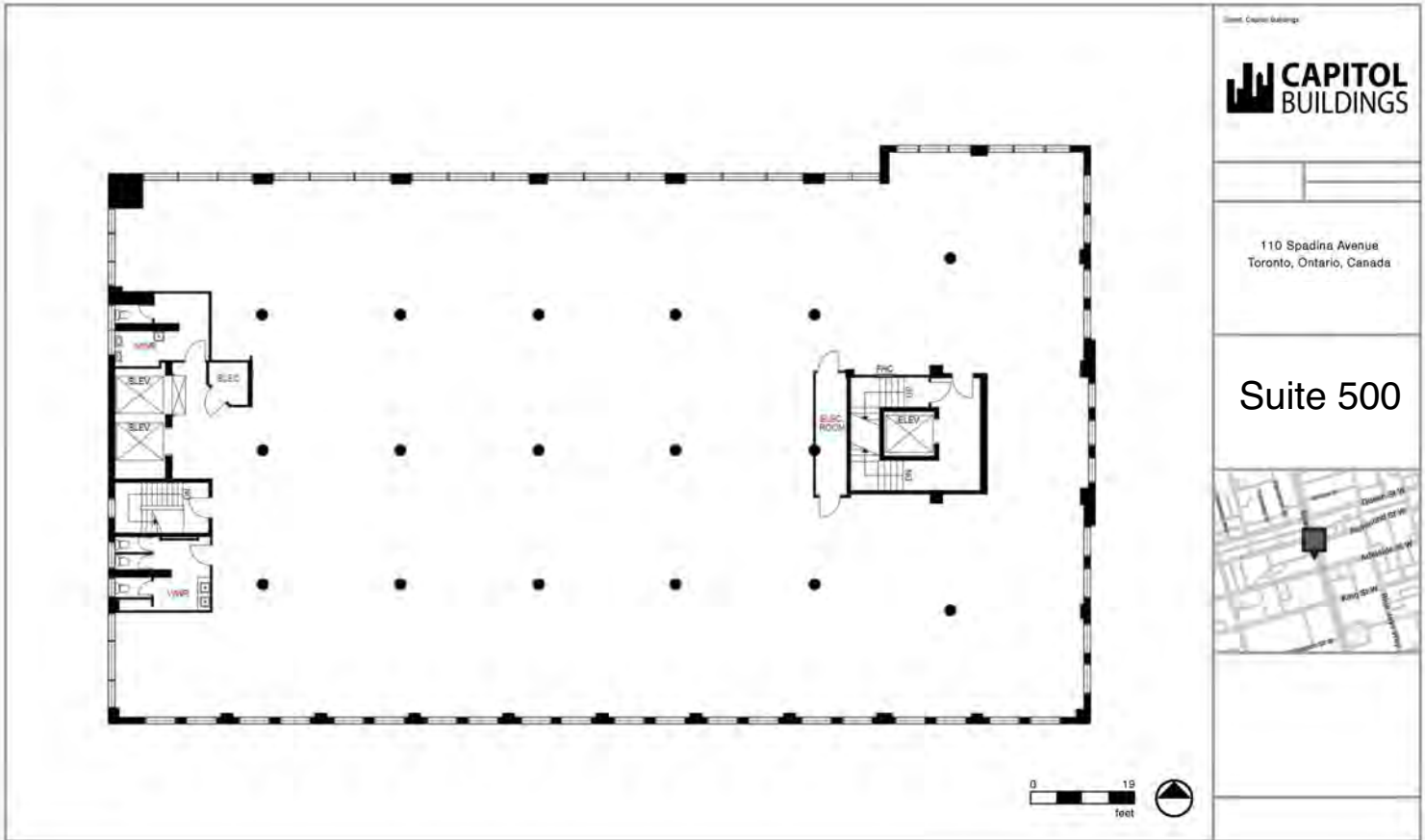
PHOTO GALLERY



Photos of Recently Improved Units



Floor Plan





THE TOWER BUILDING

110 Spadina Avenue
Toronto, Ontario

LEASING CONTACT:

Harry Glicksman
Leasing Representative
+1 416 930 0432
harry@capbuildings.com

Capitol Buildings
366 Adelaide Street West, Suite 605
Toronto, Ontario M5V 1R9
tel +1 416 596 0556 x 257 | fax +1 416 596 7390
www.capitolbuildings.com