

# THE TOWER BUILDING

110 Spadina Avenue

Toronto, Ontario | SUITE 700 - 6,707 SF



# The Tower Building

110 Spadina Avenue, Toronto, ON

The Tower Building is a 10 story heritage landmark located in the heart of Toronto's vibrant Downtown West. All building systems have been upgraded to modern standards while maintaining the integrity of its original architectural design. There are two completely refurbished passenger elevators and a freight elevator. The building is accessible from a number of public transit routes and it is within easy walking distance of the University Avenue subway and Union Station. In addition there is an incredible rooftop patio with free Wi-fi.

---

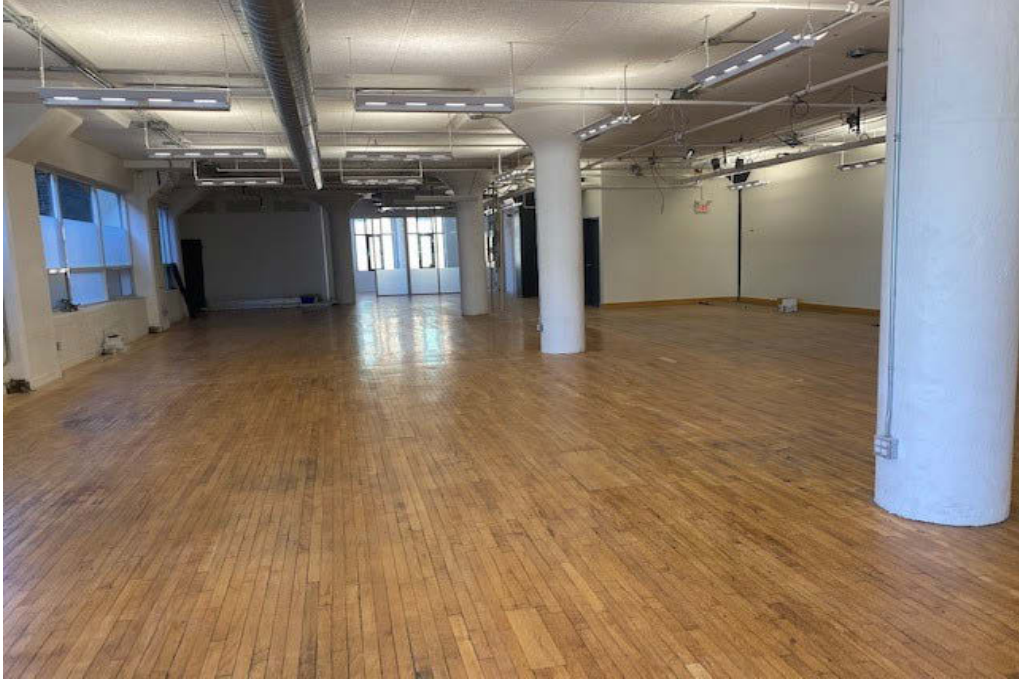
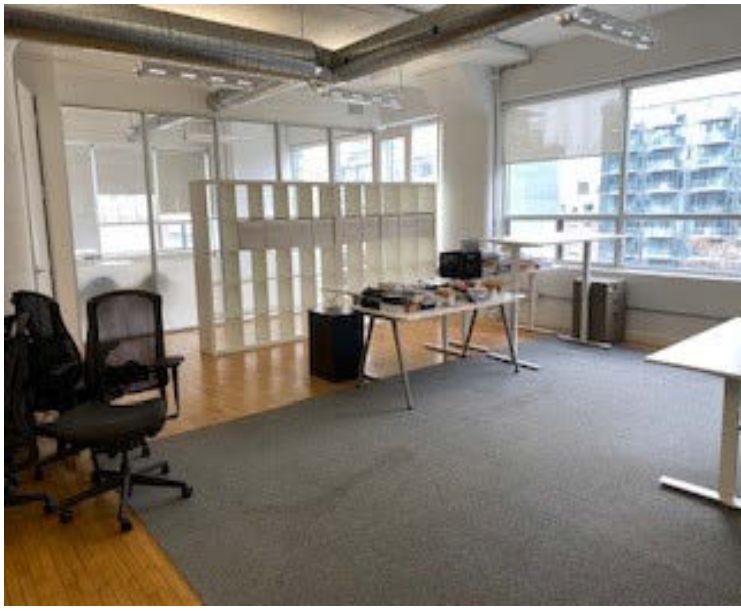
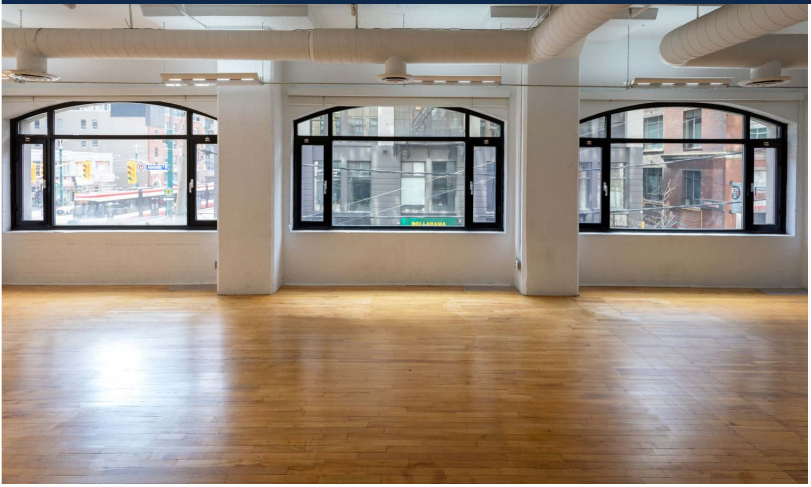
## Featuring

Suite 700 - 6,707 SF

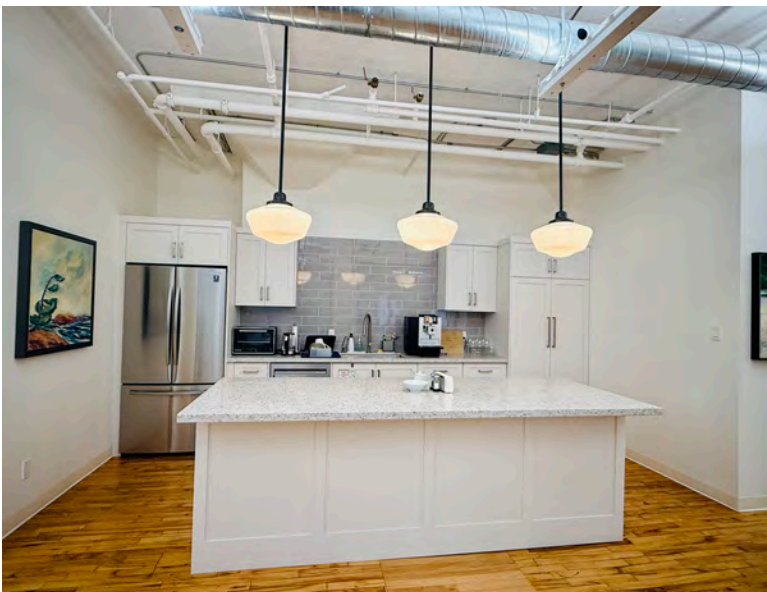
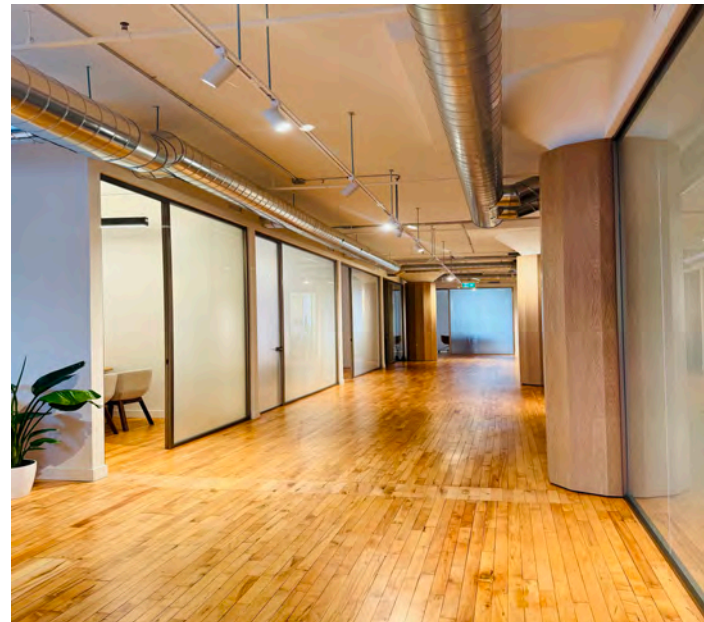
- Space will be brought back to base building condition
- Landlord will build out suites to Tenant's specification
- High ceilings & large windows that are operable
- Hardwood floors
- Tenant-controlled heat & cooling
- High speed Internet
- Monthly parking available at market rates
- Dogs and bicycles are welcome



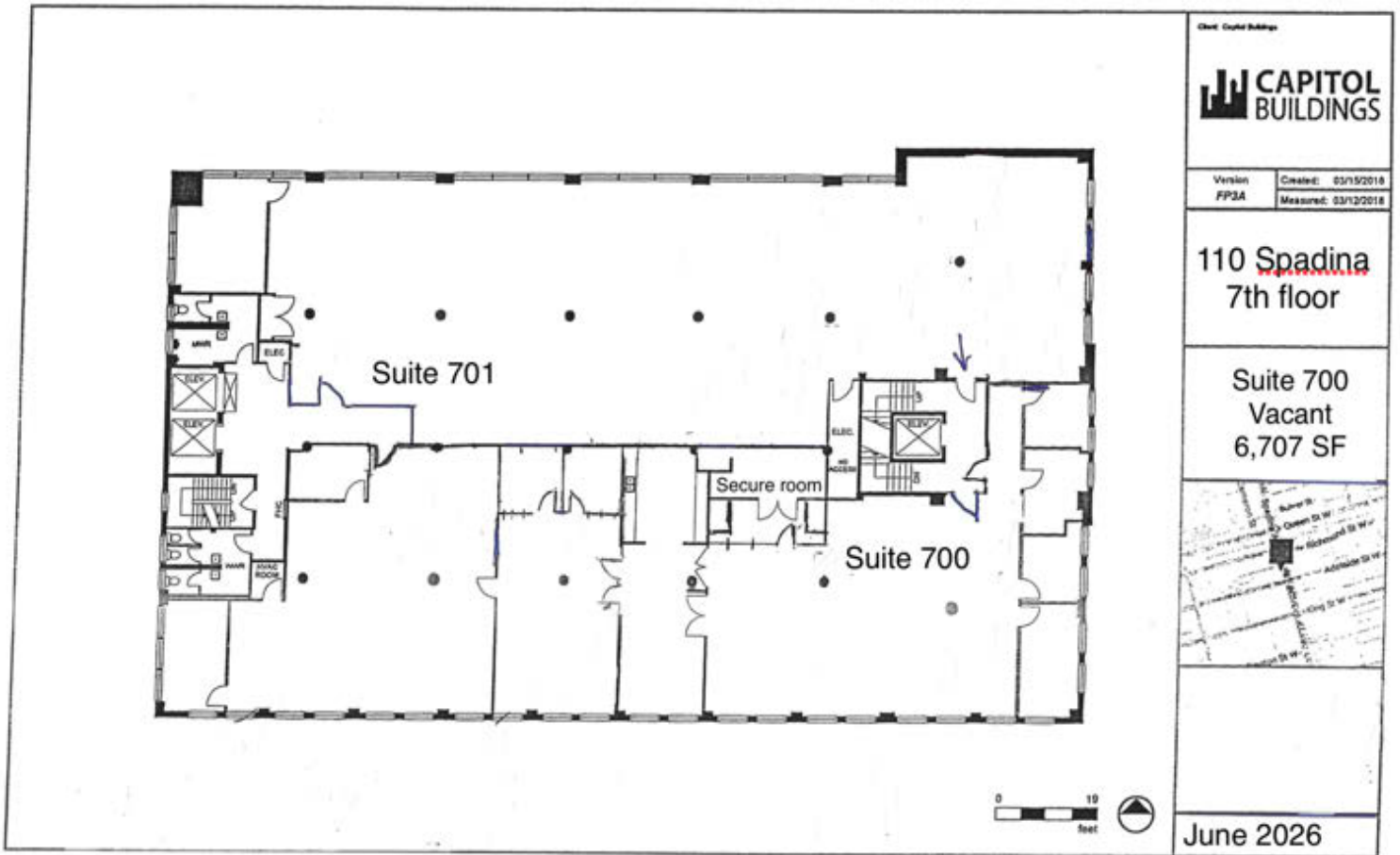
# PHOTO GALLERY



# Photos of Recently Improved Units



# Floor Plan





# THE TOWER BUILDING

---

110 Spadina Avenue  
Toronto, Ontario

## LEASING CONTACT:

**Harry Glicksman**  
Leasing Representative  
+1 416 930 0432  
[harry@capbuildings.com](mailto:harry@capbuildings.com)

---

**Capitol Buildings**  
366 Adelaide Street West, Suite 605  
Toronto, Ontario M5V 1R9  
tel +1 416 596 0556 x 257 | fax +1 416 596 7390  
[www.capitolbuildings.com](http://www.capitolbuildings.com)