

# The Deluxe Building

380 Adelaide Street West

Toronto, Ontario | Suite 100 - 4,846 SF



# THE DELUXE BUILDING

380 Adelaide Street West, Toronto, ON

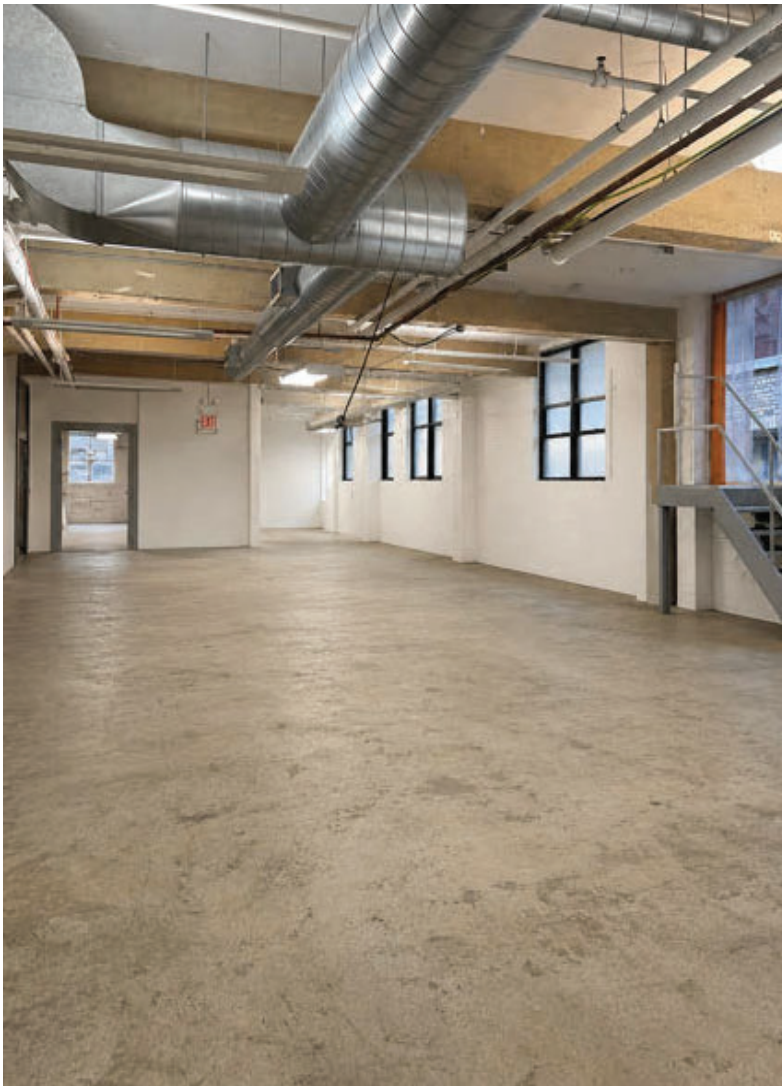
The Deluxe Building is a 3 story boutique brick-and-beam office building, featuring character-rich spaces with hardwood floors, exposed ceilings, and large windows. Modernized interiors and a central location make it ideal for creative and professional users seeking a polished, upscale workspace. The building is accessible from a number of public transit routes and it is within easy walking distance of the University Ave. subway and Union Station.

## Featuring Suite 100 - 4,846 SF

- Landlord is willing to return this unit to base building condition and make leasehold improvements to suit Tenant's requirements.
- High ceilings & large windows.
- Concrete floor
- Tenant controlled heat & cooling
- High speed Internet
- Dogs & bicycles welcome
- Monthly parking available at market rates
- Access to a rooftop patio is available next door.



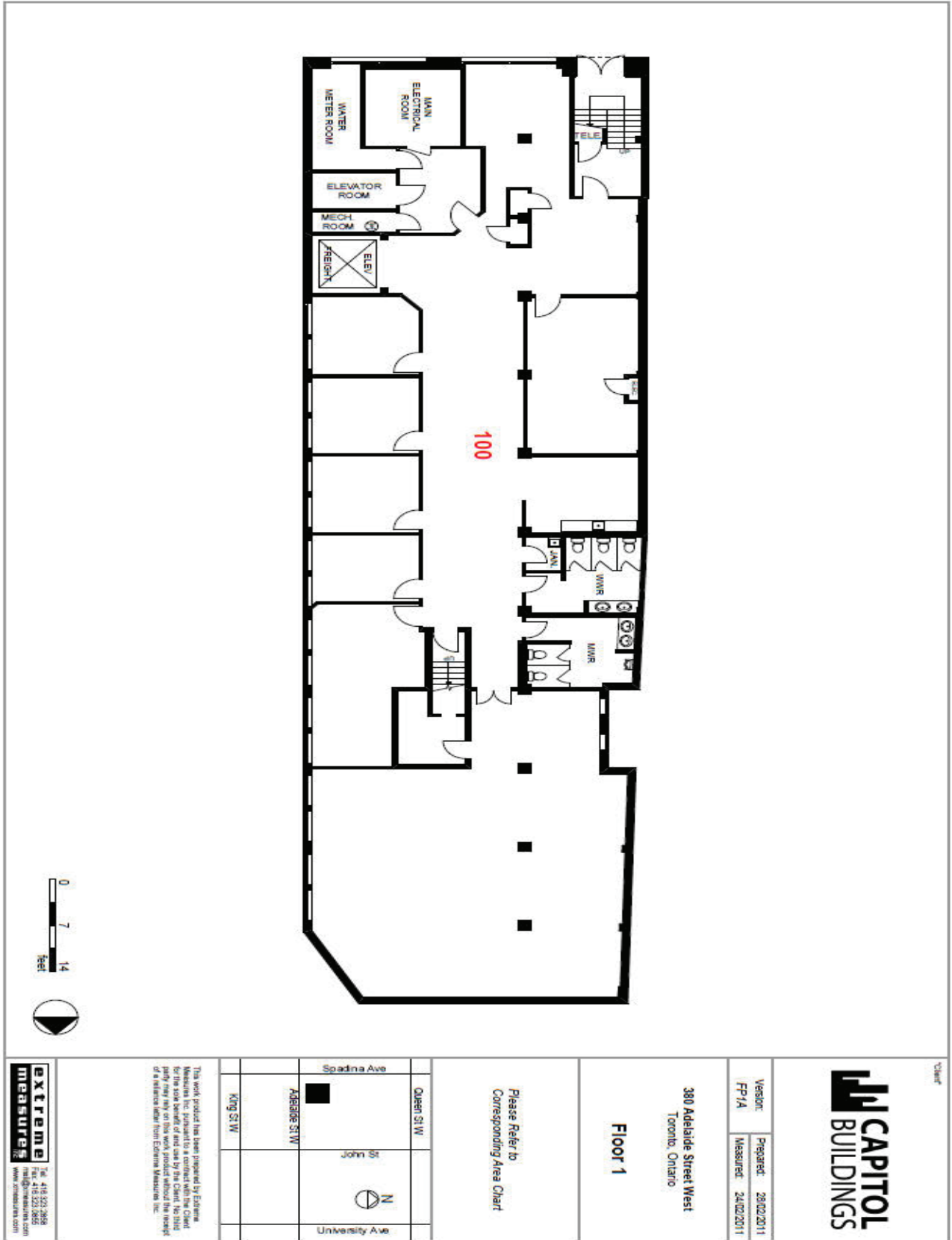
# PHOTO GALLERY



# Photos of Recently Improved Units



# FLOOR PLAN



Client

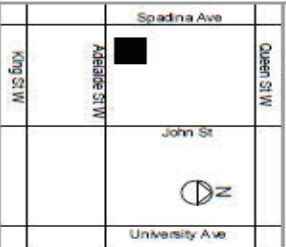


Version: 29/02/2011  
 Prepared: 29/02/2011  
 FP14 Measured: 24/02/2011

380 Adelaide Street West  
 Toronto, Ontario

Floor 1

Please Refer to  
 Corresponding Area Chart



This work product has been prepared by Extrema Measures Inc. pursuant to a contract with the Client for the sole benefit and use of the Client. No third party shall be entitled to rely on this work product or a reliance shall be placed on it.

**Extrema Measures Inc.**  
 Tel: 416 521-2858  
 info@extremameasures.com  
 www.extremameasures.com

380 ADELAIDE STREET WEST



# THE DELUXE BUILDING

---

380 Adelaide Street West  
Toronto, Ontario

## LEASING CONTACT:

**Harry Glicksman**

Leasing Representative

+1 416 930 0432

[harry@capbuildings.com](mailto:harry@capbuildings.com)

---

## Capitol Buildings

366 Adelaide Street West, Suite 605

Toronto, Ontario M5V 1R9

tel +1 416 596 0556 x 257 | fax +1 416 596 7390

[www.capitolbuildings.com](http://www.capitolbuildings.com)