

The Deluxe Building

380 Adelaide Street West

Toronto, Ontario | Suite 200 - 5,179 SF



THE DELUXE BUILDING

380 Adelaide Street West, Toronto, ON

The Deluxe Building is a 3 story boutique brick-and-beam office building, featuring character-rich spaces with hardwood floors, exposed ceilings, and large windows. Modernized interiors and a central location make it ideal for creative and professional users seeking a polished, upscale workspace. The building is accessible from a number of public transit routes and it is within easy walking distance of the University Ave. subway and Union Station.

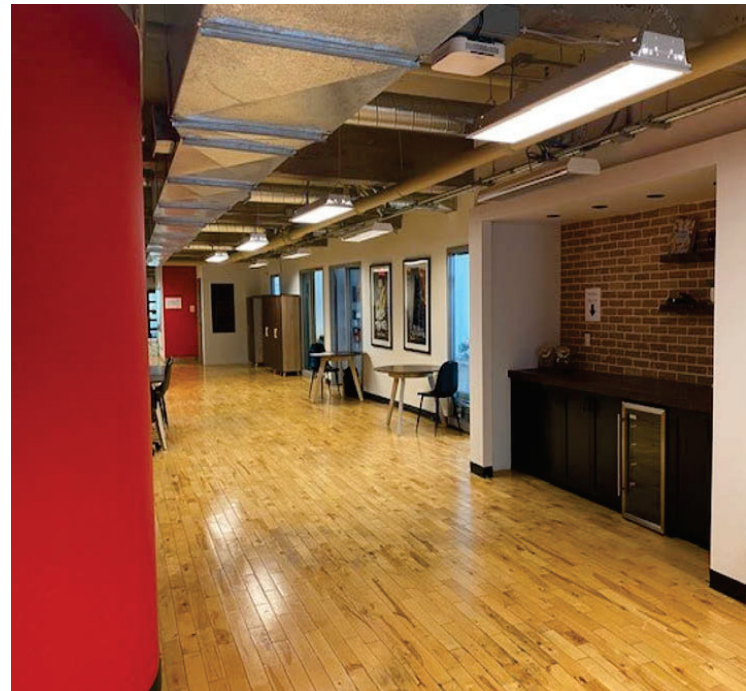
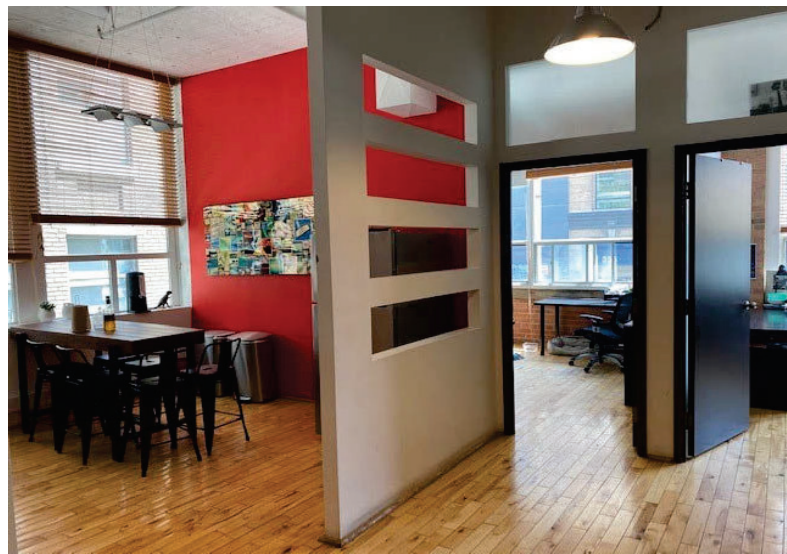
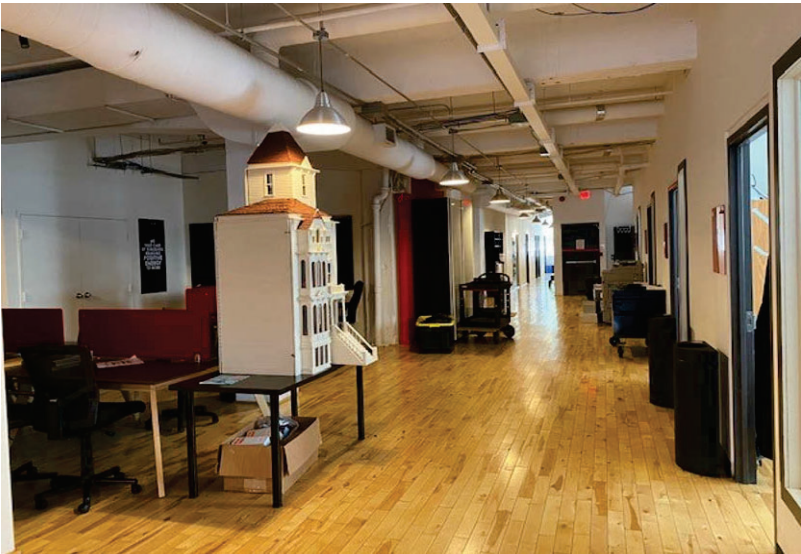
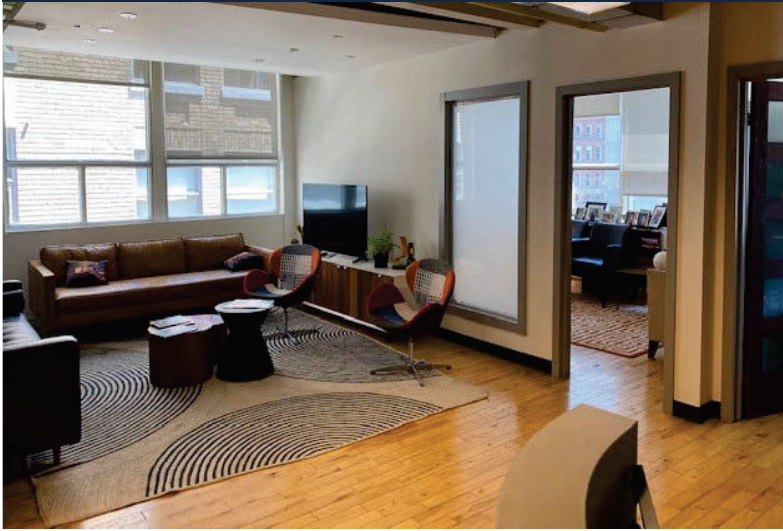
Featuring

Suite 200 - 5,179 SF

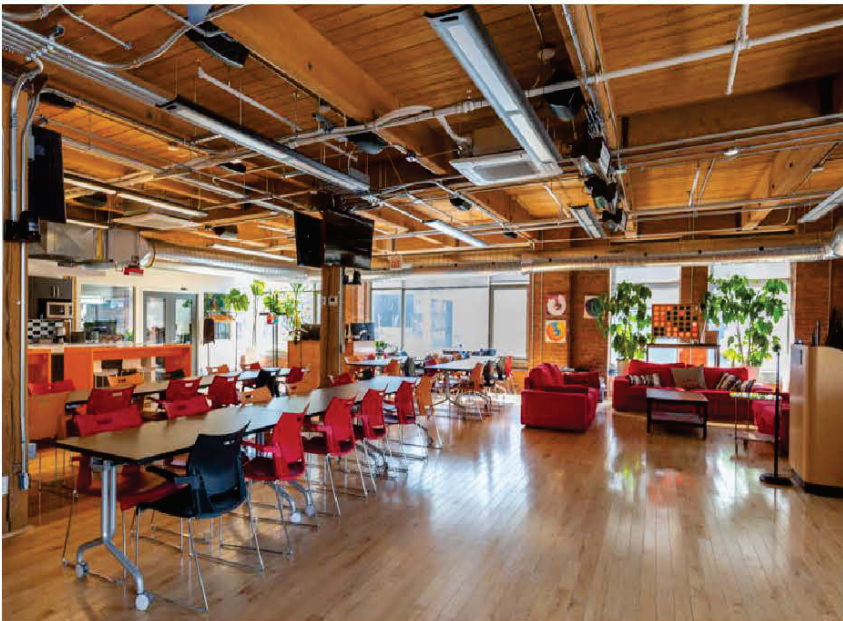
- Landlord is willing to return this unit to base building condition and make leasehold improvements to suit Tenant's requirements.
- High ceilings & large windows.
- Hardwood floors
- Tenant controlled heat & cooling
- High speed Internet
- Dogs & bicycles welcome
- Monthly parking available at market rates
- Access to a rooftop patio is available next door



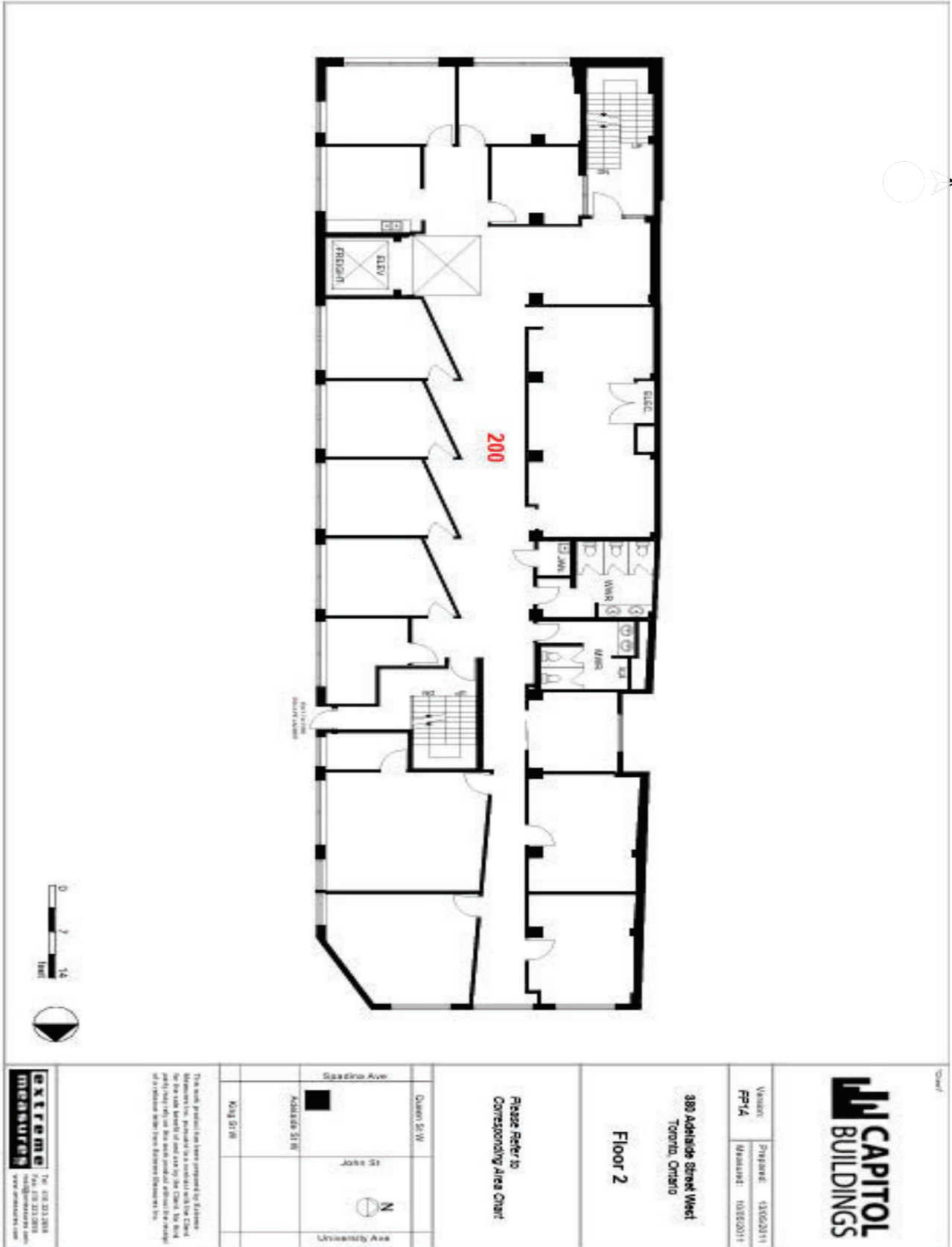
PHOTO GALLERY



Photos of Recently Improved Units



FLOOR PLAN



380 ADELAIDE STREET WEST



THE DELUXE BUILDING

380 Adelaide Street West
Toronto, Ontario

LEASING CONTACT:

Harry Glicksman

Leasing Representative

+1 416 930 0432

harry@capbuildings.com

Capitol Buildings

366 Adelaide Street West, Suite 605

Toronto, Ontario M5V 1R9

tel +1 416 596 0556 x 257 | fax +1 416 596 7390

www.capitolbuildings.com